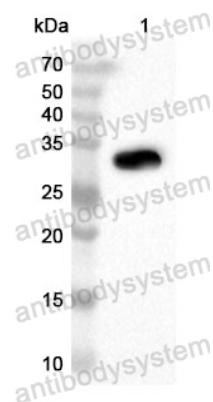


Anti-CD292/BMPR1A Polyclonal Antibody

Summary

Catalog No.	PHE19202
Host species	Rabbit
Tested applications	ELISA: 1:4000-1:8000, IHC: 1:50-1:100, WB: 1:1000-1:4000
Species reactivity	Human, Mouse, Rat
Immunogen	E. coli - derived recombinant Human CD292/BMPR1A (Tyr179-Ile378).
Form	Liquid
Storage buffer	0.01M PBS, pH 7.4, 50% Glycerol, 0.05% Proclin 300.
Clonality	Polyclonal
Isotype	IgG
Applications	ELISA, IHC, WB
Target	ACVRLK3, Bone morphogenetic protein receptor type-1A, ALK3, BMPR-1A, Serine/threonine-protein kinase receptor R5, SKR5, Activin receptor-like kinase 3, ALK-3, BMP type-1A receptor, BMPR1A, CD292
Purification	Purified by antigen affinity column.
Accession	P36894
Stability and Storage	Use a manual defrost freezer and avoid repeated freeze thaw cycles. Store at 2 to 8°C for frequent use. Store at -20 to -80°C for twelve months from the date of receipt.
Note	For research use only.

Data Image



Western Blot

Recombinant Protein lysates were subjected to SDS PAGE followed by western blot with CD292/BMPRI1A antibody (PHE19202) at 1 μ g/ml.

Lane 1: Recombinant Protein

Second Ab: Goat Anti-Rabbit IgG H&L Polyclonal antibody, HRP (PTB96431) at 0.1 μ g/mL.

Predict MW: 35 kDa

Observed MW: 35 kDa