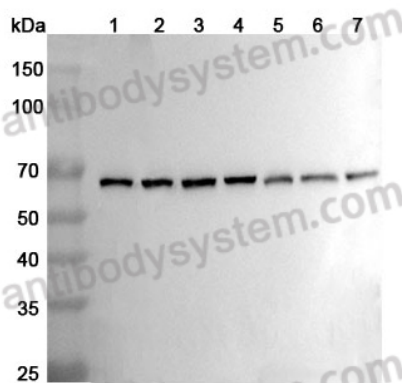


Anti-BECN1 Polyclonal Antibody

Summary

Catalog No.	PHG80202
Host species	Rabbit
Tested applications	ELISA: 1:4000-1:8000, IHC: 1:50-1:100, WB: 1:1000-1:4000
Species reactivity	Human, Mouse, Rat
Immunogen	E. coli - derived recombinant Human BECN1 (Thr141-Lys450).
Form	Liquid
Storage buffer	0.01M PBS, pH 7.4, 50% Glycerol, 0.05% Proclin 300.
Concentration	1.31 mg/ml
Clonality	Polyclonal
Isotype	IgG
Applications	ELISA, IHC, WB
Target	BECN1, Beclin-1, Coiled-coil myosin-like BCL2-interacting protein, Protein GT197, GT197
Purification	Purified by antigen affinity column.
Accession	Q14457
Stability and Storage	Use a manual defrost freezer and avoid repeated freeze thaw cycles. Store at 2 to 8°C for frequent use. Store at -20 to -80°C for twelve months from the date of receipt.
Note	For research use only.

Data Image



Western Blot

Various lysates were subjected to SDS PAGE followed by western blot with Beclin-1 antibody (PHG80202) at 1 μ g/ml.

Lane 1: Jurkat cell lysate
Lane 2: Mouse testis lysate
Lane 3: Mouse brain lysate
Lane 4: Mouse lung lysate
Lane 5: Rat testis lysate
Lane 6: Rat brain lysate
Lane 7: Rat lung lysate

Second Ab: Goat Anti-Rabbit IgG H&L Polyclonal antibody, HRP (PTB96431) at 0.1 μ g/mL.

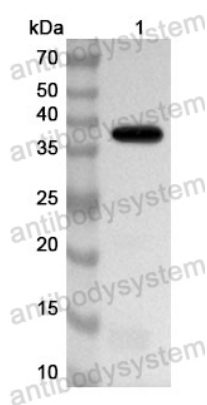
Predict MW: 52 kDa
Observed MW: 60 kDa

Recombinant Protein lysates were subjected to SDS PAGE followed by western blot with BECN1 antibody (PHG80202) at 1 μ g/ml.

Lane 1: Recombinant Protein

Second Ab: Goat Anti-Rabbit IgG H&L Polyclonal antibody, HRP (PTB96431) at 0.1 μ g/mL.

Predict MW: 39 kDa
Observed MW: 39 kDa



Western Blot