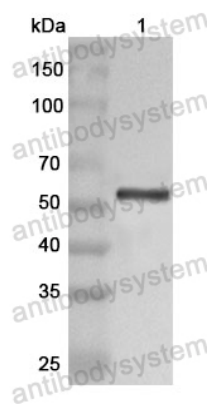


Anti-Human PPP2R2A Polyclonal Antibody

Summary

Catalog No.	PHF59101
Host species	Rabbit
Tested applications	ELISA: 1:4000-1:8000, IHC: 1:50-1:100, WB: 1:1000-1:4000
Species reactivity	Human
Immunogen	E. coli - derived recombinant Human PPP2R2A (Met1-Asn447).
Form	Liquid
Storage buffer	0.01M PBS, pH 7.4, 50% Glycerol, 0.05% Proclin 300.
Clonality	Polyclonal
Isotype	IgG
Applications	ELISA, IHC, WB
Target	PP2A subunit B isoform R2-alpha, Serine/threonine-protein phosphatase 2A 55 kDa regulatory subunit B alpha isoform, PP2A subunit B isoform PR55-alpha, PPP2R2A, PP2A subunit B isoform alpha, PP2A subunit B isoform B55-alpha
Purification	Purified by antigen affinity column.
Accession	P63151
Stability and Storage	Use a manual defrost freezer and avoid repeated freeze thaw cycles. Store at 2 to 8°C for frequent use. Store at -20 to -80°C for twelve months from the date of receipt.
Note	For research use only.

Data Image



Western Blot

Recombinant Protein lysates were subjected to SDS PAGE followed by western blot with PPP2R2A antibody (PHF59101) at 1 μ g/ml.

Lane 1: Recombinant Protein

Second Ab: Goat Anti-Rabbit IgG H&L Polyclonal antibody, HRP (PTB96431) at 0.1 μ g/mL.

Predict MW: 54 kDa

Observed MW: 54 kDa