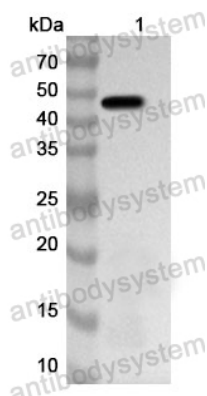


Anti-PIP4K2B/PIP4KII-beta Polyclonal Antibody

Summary

Catalog No.	PHF65401
Host species	Rabbit
Tested applications	ELISA: 1:4000-1:8000, IHC: 1:50-1:100, WB: 1:1000-1:4000
Species reactivity	Human, Mouse, Rat
Immunogen	E. coli - derived recombinant Human PIP4K2B/PIP4KII-beta (Ser2-Thr416).
Form	Liquid
Storage buffer	0.01M PBS, pH 7.4, 50% Glycerol, 0.05% Proclin 300.
Clonality	Polyclonal
Isotype	IgG
Applications	ELISA, IHC, WB
Target	1-phosphatidylinositol 5-phosphate 4-kinase 2-beta, Phosphatidylinositol 5-phosphate 4-kinase type-2 beta, PtdIns(5)P-4-kinase isoform 2-beta, Phosphatidylinositol 5-phosphate 4-kinase type II beta, PIP4KII-beta, Diphosphoinositide kinase 2-beta, PI(5)P 4-kinase type II beta, PIP5K2B, PIP4K2B
Purification	Purified by antigen affinity column.
Accession	P78356
Stability and Storage	Use a manual defrost freezer and avoid repeated freeze thaw cycles. Store at 2 to 8°C for frequent use. Store at -20 to -80°C for twelve months from the date of receipt.
Note	For research use only.

Data Image



Western Blot

Recombinant Protein lysates were subjected to SDS PAGE followed by western blot with PIP4K2B/PIP4KII-beta antibody (PHF65401) at 1 μ g/ml.

Lane 1: Recombinant Protein

Second Ab: Goat Anti-Rabbit IgG H&L Polyclonal antibody, HRP (PTB96431) at 0.1 μ g/mL.

Predict MW: 48 kDa

Observed MW: 48 kDa