

Anti-mCherry Monoclonal Antibody (1A186)

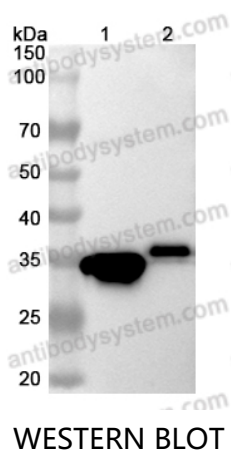
Summary

Catalog No.	MXX51302
Clone ID	1A186
Host species	Mouse
Tested applications	ELISA: 1:2000-1:6000, IHC: 1:20-1:200, IF: 1:20-1:200, WB: 1:1000-1:5000
Species reactivity	mCherry, DsRed
Immunogen	mCherry
Form	Liquid
Storage buffer	0.01M PBS, pH 7.4, 50% Glycerol, 0.05% Proclin 300.
Concentration	2 mg/ml
Purity	>95% as determined by SDS-PAGE.
Clonality	Monoclonal
Isotype	IgG2b
Applications	ELISA,IHC, IF, WB
Target	MCherry fluorescent protein, mCherry
Purification	Protein A/G purified from cell culture supernatant.
Endotoxin level	Please contact with the lab for this information.
Accession	X5DSL3
Stability and Storage	Use a manual defrost freezer and avoid repeated freeze-thaw cycles. Store at 4°C short term (1-2 weeks). Store at -20°C 12 months. Store at -80°C long term.

Note

For research use only.

Data Image



Various Recombinant Protein lysates were subjected to SDS PAGE followed by western blot with mCherry Tag antibody (MXX51302) at 1µg/ml.

Lane 1: Recombinant mCherry Protein(YXX51301)

Lane 2: Recombinant DsRed2 Protein (YWK27401)

Second Ab: Goat Anti-Mouse IgG H&L Polyclonal antibody, HRP (PMB96431) at 0.1 µg/mL.