

Research Grade Anti-Human CD38/ADPRC 1 & CD3E Bispecific Antibody (AMG-424)

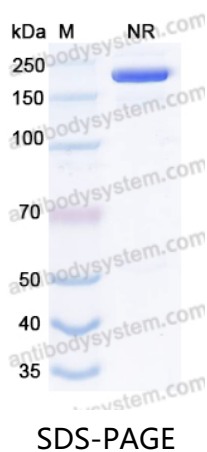
Summary

Catalog No.	DHD80821
Alternative Names	Bispecific
Clone ID	AMG-424
Host species	Human
Species reactivity	Human
Form	Liquid
Storage buffer	0.01M PBS, pH 7.4.
Concentration	1.5 mg/ml
Purity	>95% as determined by SDS-PAGE.
Clonality	Monoclonal
Isotype	half-IG G1 - kappa / (scFv - heavy - lambda) -h-CH2-CH3
Applications	Research Grade Biosimilar
Target	Cyclic ADP-ribose hydrolase 1, ADP-ribosyl cyclase/cyclic ADP-ribose hydrolase 1, cADPr hydrolase 1, 2'-phospho-ADP-ribosyl cyclase/2'-phospho-cyclic-ADP-ribose transferase, T10, 2'-phospho-cyclic-ADP-ribose transferase, CD38, ADPRC 1, ADP-ribosyl cyclase 1, 2'-phospho-ADP-ribosyl cyclase, T3E, T-cell surface antigen T3/Leu-4 epsilon chain, CD3e, CD3E, T-cell surface glycoprotein CD3 epsilon chain
Purification	Protein A/G purified from cell culture supernatant.

Recombinant Proteins & Antibodies

Endotoxin level	Please contact with the lab for this information.
Expression system	Mammalian Cells
Accession	P28907 & P07766
Stability and Storage	Use a manual defrost freezer and avoid repeated freeze-thaw cycles. Store at 4°C short term (1-2 weeks). Store at -20°C 12 months. Store at -80°C long term.
Note	For research use only. Not suitable for clinical or therapeutic use.

Data Image



SDS PAGE for AMG-424