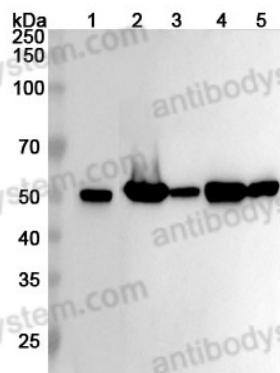


Anti-TUBB3 Polyclonal Antibody

Summary

Catalog No.	PHG56701
Host species	Rabbit
Tested applications	ELISA: 1:4000-1:8000, IHC: 1:50-1:100, WB: 1:1000-1:4000
Species reactivity	Human, Mouse, Rat
Immunogen	E. coli - derived recombinant Human TUBB3 (Met1-Lys450).
Form	Liquid
Storage buffer	0.01M PBS, pH 7.4, 50% Glycerol, 0.05% Proclin 300.
Concentration	1.02 mg/ml
Clonality	Polyclonal
Isotype	IgG
Applications	ELISA, IHC, WB
Target	Tubulin beta-III, TUBB4, TUBB3, Tubulin beta-4 chain, Tubulin beta-3 chain
Purification	Purified by antigen affinity column.
Accession	Q13509
Stability and Storage	Use a manual defrost freezer and avoid repeated freeze thaw cycles. Store at 2 to 8°C for frequent use. Store at -20 to -80°C for twelve months from the date of receipt.
Note	For research use only.

Data Image



WESTERN BLOT

Various lysates were subjected to SDS PAGE followed by western blot with TUBB3 antibody (PHG56701) at 1ug/mL .

Lane 1: N2A cell lysate

Lane 2: Mouse brain lysate

Lane 3: Mouse testis lysate

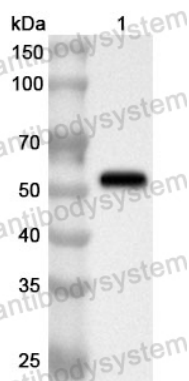
Lane 4: Rat brain lysate

Lane 5: Rat testis lysate

Second Ab: Goat Anti-Rabbit IgG H&L Polyclonal antibody, HRP (PTB96431) at 0.1 µg/mL.

Predict MW: 50 kDa

Observed MW: 55 kDa



Western Blot

Recombinant Protein lysates were subjected to SDS PAGE followed by western blot with TUBB3 antibody (PHG56701) at 1 µg/ml.

Lane 1: Recombinant Protein

Second Ab: Goat Anti-Rabbit IgG H&L Polyclonal antibody, HRP (PTB96431) at 0.1 µg/mL.

Predict MW: 53 kDa

Observed MW: 53 kDa