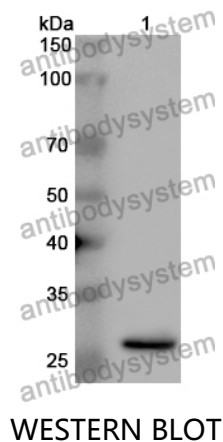


Anti-MIB1 Polyclonal Antibody

Summary

Catalog No.	PHJ17601
Host species	Rabbit
Tested applications	ELISA: 1:4000-1:8000, IHC: 1:50-1:100, WB: 1:1000-1:4000
Species reactivity	Human, Mouse, Rat
Immunogen	E. coli - derived recombinant Human MIB1 (Arg769-Glu1000).
Form	Liquid
Storage buffer	0.01M PBS, pH 7.4, 50% Glycerol, 0.05% Proclin 300.
Clonality	Polyclonal
Isotype	IgG
Applications	ELISA, IHC, WB
Target	Zinc finger ZZ type with ankyrin repeat domain protein 2,MIB1,DIP-1,Mind bomb homolog 1,ZZANK2,DAPK-interacting protein 1,E3 ubiquitin-protein ligase MIB1,KIAA1323,DIP1,RING-type E3 ubiquitin transferase MIB1
Purification	Purified by antigen affinity column.
Accession	Q86YT6
Stability and Storage	Use a manual defrost freezer and avoid repeated freeze thaw cycles. Store at 2 to 8°C for frequent use. Store at -20 to -80°C for twelve months from the date of receipt.
Note	For research use only.

Data Image



Recombinant Protein lysates were subjected to SDS PAGE followed by western blot with MIB1 antibody (PHJ17601) at 1 μ g/ml.

Lane 1: Recombinant protein

Second Ab: Goat Anti-Rabbit IgG H&L Polyclonal antibody, HRP (PTB96431) at 0.1 μ g/mL.

Predict MW: 28 kDa

Observed MW: 28 kDa