

# Anti-HOMER1 Polyclonal Antibody

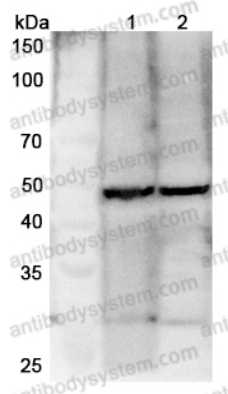
## Summary

---

<b>Catalog No.</b>	PHJ17501
<b>Host species</b>	Rabbit
<b>Tested applications</b>	ELISA: 1:4000-1:8000, IHC: 1:50-1:100, WB: 1:1000-1:4000
<b>Species reactivity</b>	Human, Mouse, Rat
<b>Immunogen</b>	E. coli - derived recombinant Human HOMER1 (Met1-Ser354).
<b>Form</b>	Liquid
<b>Storage buffer</b>	0.01M PBS, pH 7.4, 50% Glycerol, 0.05% Proclin 300.
<b>Clonality</b>	Polyclonal
<b>Isotype</b>	IgG
<b>Applications</b>	ELISA, IHC, WB
<b>Target</b>	Homer protein homolog 1,HOMER1,Homer-1,SYN47
<b>Purification</b>	Purified by antigen affinity column.
<b>Accession</b>	Q86YM7
<b>Stability and Storage</b>	Use a manual defrost freezer and avoid repeated freeze thaw cycles. Store at 2 to 8°C for frequent use. Store at -20 to -80°C for twelve months from the date of receipt.
<b>Note</b>	For research use only.

## Data Image

---



Western Blot

Various lysates were subjected to SDS PAGE followed by western blot with HOMER1 antibody (PHJ17501) at 1 $\mu$ g/ml.

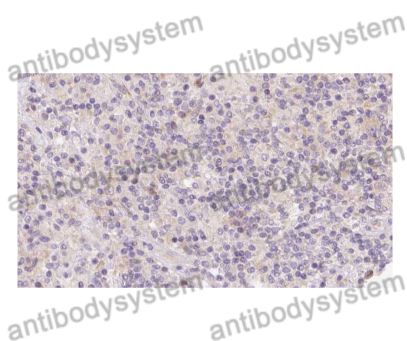
Lane 1: Mouse brain lysate

Lane 2: Rat brain lysate

Second Ab: Goat Anti-Rabbit IgG H&L Polyclonal antibody, HRP (PTB96431) at 0.1  $\mu$ g/mL.

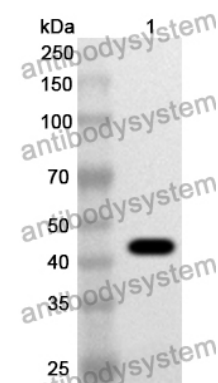
Predict MW: 40 kDa

Observed MW: 48 kDa



Immunohistochemical analysis of human lymph carcinoma stained for HOMER1 with PHJ17501.

Immunohistochemical



Western Blot

Recombinant Protein lysates were subjected to SDS PAGE followed by western blot with HOMER1 antibody (PHJ17501) at 1  $\mu$ g/ml.

Lane 1: Recombinant Protein

Second Ab: Goat Anti-Rabbit IgG H&L Polyclonal antibody, HRP (PTB96431) at 0.1  $\mu$ g/mL.

Predict MW: 43 kDa

Observed MW: 43 kDa