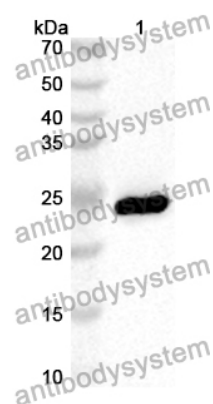


Anti-Mouse IL22RA1 Polyclonal Antibody

Summary

Catalog No.	PMJ22701
Host species	Rabbit
Tested applications	ELISA: 1:4000-1:8000, IHC: 1:50-1:100, WB: 1:1000-1:4000
Species reactivity	Mouse
Immunogen	E. coli - derived recombinant Mouse IL22RA1 (Gln26-Thr221).
Form	Liquid
Storage buffer	0.01M PBS, pH 7.4, 50% Glycerol, 0.05% Proclin 300.
Clonality	Polyclonal
Isotype	IgG
Applications	ELISA, IHC, WB
Target	CRF2-9, IL-22RA1, IL22RA1, ZcytoR11, IL-22R-alpha-1, IL-22 receptor subunit alpha-1, Cytokine receptor class-II member 9, Interleukin-22 receptor subunit alpha-1, Cytokine receptor family 2 member 9, IL22R
Purification	Purified by antigen affinity column.
Accession	Q80XZ4
Stability and Storage	Use a manual defrost freezer and avoid repeated freeze thaw cycles. Store at 2 to 8°C for frequent use. Store at -20 to -80°C for twelve months from the date of receipt.
Note	For research use only.

Data Image



Western Blot

Recombinant Protein lysates were subjected to SDS PAGE followed by western blot with IL22RA1 antibody (PMJ22701) at 1 μ g/ml.

Lane 1: Recombinant protein

Second Ab: Goat Anti-Rabbit IgG H&L Polyclonal antibody, HRP (PTB96431) at 0.1 μ g/mL.

Predict MW: 25 kDa

Observed MW: 25 kDa