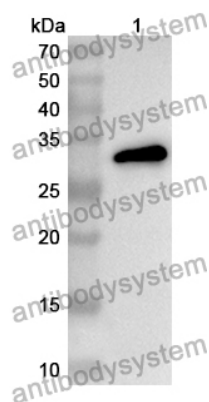


Anti-Mouse PLA2R1/PLA2R Polyclonal Antibody

Summary

Catalog No.	PMG37501
Host species	Rabbit
Tested applications	ELISA: 1:4000-1:8000, IHC: 1:50-1:100, WB: 1:1000-1:4000
Species reactivity	Mouse
Immunogen	E. coli - derived recombinant Mouse PLA2R1/PLA2R (Ser242-Gly507).
Form	Liquid
Storage buffer	0.01M PBS, pH 7.4, 50% Glycerol, 0.05% Proclin 300.
Clonality	Polyclonal
Isotype	IgG
Applications	ELISA, IHC, WB
Target	PLA2R, 180 kDa secretory phospholipase A2 receptor, Secretory phospholipase A2 receptor, PLA2-R, M-type receptor, C-type lectin domain family 13 member C, Soluble PLA2-R, PLA2R1, Soluble PLA2R, CLEC13C
Purification	Purified by antigen affinity column.
Accession	Q62028
Stability and Storage	Use a manual defrost freezer and avoid repeated freeze thaw cycles. Store at 2 to 8°C for frequent use. Store at -20 to -80°C for twelve months from the date of receipt.
Note	For research use only.

Data Image



Western Blot

Recombinant Protein lysates were subjected to SDS PAGE followed by western blot with PLA2R1/PLA2R antibody (PMG37501) at 1 μ g/ml.

Lane 1: Recombinant protein

Second Ab: Goat Anti-Rabbit IgG H&L Polyclonal antibody, HRP (PTB96431) at 0.1 μ g/mL.

Predict MW: 33 kDa

Observed MW: 33 kDa