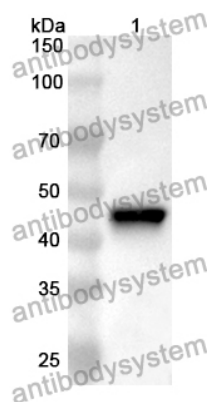


Anti-Mouse GUCY2C/GCC Polyclonal Antibody

Summary

Catalog No.	PMD65601
Host species	Rabbit
Tested applications	ELISA: 1:4000-1:8000, IHC: 1:50-1:100, WB: 1:1000-1:4000
Species reactivity	Mouse
Immunogen	E. coli - derived recombinant Mouse GUCY2C/GCC (Gly33-Ala408).
Form	Liquid
Storage buffer	0.01M PBS, pH 7.4, 50% Glycerol, 0.05% Proclin 300.
Clonality	Polyclonal
Isotype	IgG
Applications	ELISA, IHC, WB
Target	STAR, Intestinal guanylate cyclase, GC-C, GUC2C, STA receptor, Heat-stable enterotoxin receptor, Guanylyl cyclase C, hSTAR, GUCY2C
Purification	Purified by antigen affinity column.
Accession	Q3UWA6
Stability and Storage	Use a manual defrost freezer and avoid repeated freeze thaw cycles. Store at 2 to 8°C for frequent use. Store at -20 to -80°C for twelve months from the date of receipt.
Note	For research use only.

Data Image



Western Blot

Recombinant Protein lysates were subjected to SDS PAGE followed by western blot with GUCY2C/GCC antibody (PMD65601) at 1 µg/ml.

Lane 1: Recombinant protein

Second Ab: Goat Anti-Rabbit IgG H&L Polyclonal antibody, HRP (PTB96431) at 0.1 µg/mL.

Predict MW: 45 kDa

Observed MW: 45 kDa