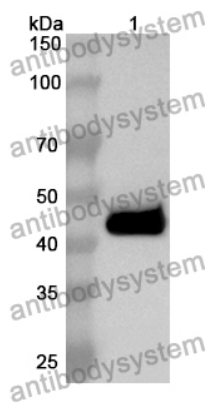


Anti-Mouse CD300b/CD300LB Polyclonal Antibody

Summary

Catalog No.	PMA01401
Host species	Rabbit
Tested applications	ELISA: 1:4000-1:8000, IHC: 1:50-1:100, WB: 1:1000-1:4000
Species reactivity	Mouse
Immunogen	E. coli - derived recombinant Mouse CD300b/CD300LB (Ser17-Tyr157).
Form	Liquid
Storage buffer	0.01M PBS, pH 7.4, 50% Glycerol, 0.05% Proclin 300.
Clonality	Polyclonal
Isotype	IgG
Applications	ELISA, IHC, WB
Target	IREM-3, CLM-7, Leukocyte mono-Ig-like receptor 5, CD300b, Immune receptor expressed on myeloid cells 3, CD300LB, CD300B, Triggering receptor expressed on myeloid cells 5, CMRF35-like molecule 7, LMIR5, CMRF35A2, IREM3, CD300 antigen-like family member B, CMRF35-A2, TREM-5, TREM5, CLM7
Purification	Purified by antigen affinity column.
Accession	Q3U497
Stability and Storage	Use a manual defrost freezer and avoid repeated freeze thaw cycles. Store at 2 to 8°C for frequent use. Store at -20 to -80°C for twelve months from the date of receipt.
Note	For research use only.

Data Image



Western Blot

Recombinant Protein lysates were subjected to SDS PAGE followed by western blot with CD300b/CD300LB antibody (PMA01401) at 1 μ g/ml.

Lane 1: Recombinant protein

Second Ab: Goat Anti-Rabbit IgG H&L Polyclonal antibody, HRP (PTB96431) at 0.1 μ g/mL.

Predict MW: 44 kDa

Observed MW: 44 kDa