

Anti-Mouse CLU Polyclonal Antibody

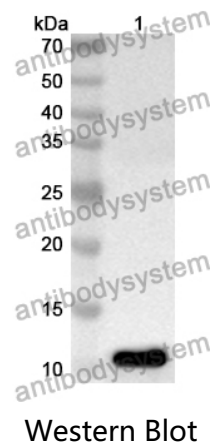
Summary

Catalog No.	PMC84101
Host species	Rabbit
Tested applications	ELISA: 1:4000-1:8000, IHC: 1:50-1:100, WB: 1:1000-1:4000
Species reactivity	Mouse
Immunogen	E. coli - derived recombinant Mouse CLU (Lys380-Glu448).
Form	Liquid
Storage buffer	0.01M PBS, pH 7.4, 50% Glycerol, 0.05% Proclin 300.
Clonality	Polyclonal
Isotype	IgG
Applications	ELISA, IHC, WB
Target	APOJ, ApoJalpha, NA1/NA2, Complement cytolysis inhibitor, Complement cytolysis inhibitor a chain, Ku70-binding protein 1, Testosterone-repressed prostate message 2, ApoJbeta, TRPM-2, Complement cytolysis inhibitor b chain, SGP-2, KUB1, Apolipoprotein J, Apo-J, Clusterin, Sulfated glycoprotein 2, Aging-associated gene 4 protein, CLI, CLU, Complement-associated protein SP-40,40
Purification	Purified by antigen affinity column.
Accession	Q06890
Stability and Storage	Use a manual defrost freezer and avoid repeated freeze thaw cycles. Store at 2 to 8°C for frequent use. Store at -20 to -80°C for twelve months from the date of receipt.

Note

For research use only.

Data Image



Recombinant Protein lysates were subjected to SDS PAGE followed by western blot with CLU antibody (PMC84101) at 1 µg/ml.

Lane 1: Recombinant protein

Second Ab: Goat Anti-Rabbit IgG H&L Polyclonal antibody, HRP (PTB96431) at 0.1 µg/mL.

Predict MW: 10 kDa

Observed MW: 10 kDa