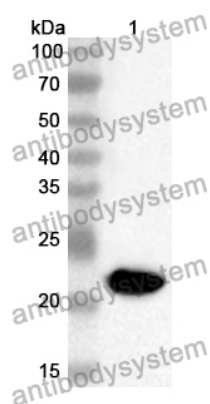


Anti-Mouse LTBR Polyclonal Antibody

Summary

Catalog No.	PME19601
Host species	Rabbit
Tested applications	ELISA: 1:4000-1:8000, IHC: 1:50-1:100, WB: 1:1000-1:4000
Species reactivity	Mouse
Immunogen	E. coli - derived recombinant Mouse LTBR (Asp47-Met221).
Form	Liquid
Storage buffer	0.01M PBS, pH 7.4, 50% Glycerol, 0.05% Proclin 300.
Clonality	Polyclonal
Isotype	IgG
Applications	ELISA, IHC, WB
Target	Tumor necrosis factor receptor superfamily member 3, Lymphotoxin-beta receptor, TNFCR, TNF-RIII, Tumor necrosis factor receptor 2-related protein, TNFR3, LTBR, TNFRSF3, Tumor necrosis factor receptor type III, D12S370, TNFR-III, Tumor necrosis factor C receptor
Purification	Purified by antigen affinity column.
Accession	P50284
Stability and Storage	Use a manual defrost freezer and avoid repeated freeze thaw cycles. Store at 2 to 8°C for frequent use. Store at -20 to -80°C for twelve months from the date of receipt.
Note	For research use only.

Data Image



Western Blot

Recombinant Protein lysates were subjected to SDS PAGE followed by western blot with LTBR antibody (PME19601) at 1 μ g/ml.

Lane 1: Recombinant protein

Second Ab: Goat Anti-Rabbit IgG H&L Polyclonal antibody, HRP (PTB96431) at 0.1 μ g/mL.

Predict MW: 22 kDa

Observed MW: 22 kDa