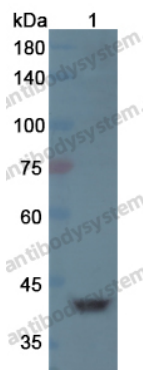


Anti-RRM2B Polyclonal Antibody

Summary

Catalog No.	PHJ13001
Host species	Rabbit
Tested applications	ELISA: 1:4000-1:8000, IHC: 1:50-1:100, WB: 1:1000-1:4000
Species reactivity	Human, Mouse
Immunogen	E. coli - derived recombinant Human RRM2B (Met1-Phe351).
Form	Liquid
Storage buffer	0.01M PBS, pH 7.4, 50% Glycerol, 0.05% Proclin 300.
Clonality	Polyclonal
Isotype	IgG
Applications	ELISA, IHC, WB
Target	p53R2,p53-inducible ribonucleotide reductase small subunit 2-like protein,P53R2,RRM2B,TP53-inducible ribonucleotide reductase M2 B,Ribonucleoside-diphosphate reductase subunit M2 B
Purification	Purified by antigen affinity column.
Accession	Q7LG56
Stability and Storage	Use a manual defrost freezer and avoid repeated freeze thaw cycles. Store at 2 to 8°C for frequent use. Store at -20 to -80°C for twelve months from the date of receipt.
Note	For research use only.

Data Image



Western blot

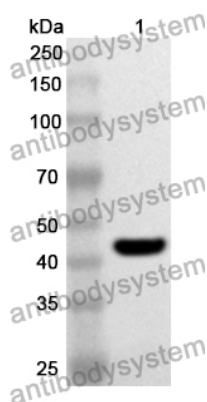
Various lysates were subjected to SDS PAGE followed by western blot with RRM2B antibody (PHJ13001) at 0.15 μ g/ml.

Lane 1: Mouse skeletal muscle lysate

Second Ab: Goat Anti-Rabbit IgG H&L Polyclonal antibody, HRP (PTB96431) at 0.1 μ g/mL.

Predict MW: 40 kDa

Observed MW: 42 kDa



Western Blot

Recombinant Protein lysates were subjected to SDS PAGE followed by western blot with RRM2B antibody (PHJ13001) at 1 μ g/ml.

Lane 1: Recombinant Protein

Second Ab: Goat Anti-Rabbit IgG H&L Polyclonal antibody, HRP (PTB96431) at 0.1 μ g/mL.

Predict MW: 43 kDa

Observed MW: 43 kDa