

# Anti-Mouse CD62L/SELL Polyclonal Antibody

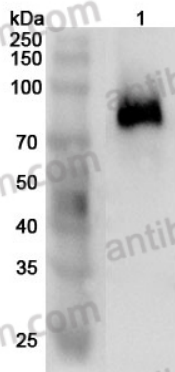
## Summary

---

|                              |   |
|------------------------------|---|
| <b>Catalog No.</b>           | PMD03302  |
| <b>Host species</b>          | Rabbit  |
| <b>Tested applications</b>   | ELISA: 1:4000-1:8000, IHC: 1:50-1:100, WB: 1:1000-1:4000  |
| <b>Species reactivity</b>    | Mouse   |
| <b>Immunogen</b>             | E. coli - derived recombinant Mouse CD62L/SELL (Thr40-Thr319).  |
| <b>Form</b>                  | Liquid  |
| <b>Storage buffer</b>        | 0.01M PBS, pH 7.4, 50% Glycerol, 0.05% Proclin 300.   |
| <b>Clonality</b>             | Polyclonal  |
| <b>Isotype</b>               | IgG   |
| <b>Applications</b>          | ELISA, IHC, WB  |
| <b>Target</b>                | CD62 antigen-like family member L, Leukocyte adhesion molecule 1, CD62L, LYAM1, TQ1, SELL, Leukocyte-endothelial cell adhesion molecule 1, L-selectin, LAM-1, gp90-MEL, LNHR, LECAM1, Lymph node homing receptor, Leukocyte surface antigen Leu-8 |
| <b>Purification</b>          | Purified by antigen affinity column.  |
| <b>Accession</b>             | P18337  |
| <b>Stability and Storage</b> | Use a manual defrost freezer and avoid repeated freeze thaw cycles. Store at 2 to 8°C for frequent use. Store at -20 to -80°C for twelve months from the date of receipt.   |
| <b>Note</b>                  | For research use only.  |

## Data Image

---



Western Blot

Various lysates were subjected to SDS PAGE followed by western blot with SELL antibody (PMD03302) at 1  $\mu$ g/ml.

Lane 1: Mouse spleen lysate

Second Ab: Goat Anti-Rabbit IgG H&L Polyclonal antibody, HRP (PTB96431) at 0.1  $\mu$ g/mL.

Predict MW: 42 kDa

Observed MW: 75 kDa