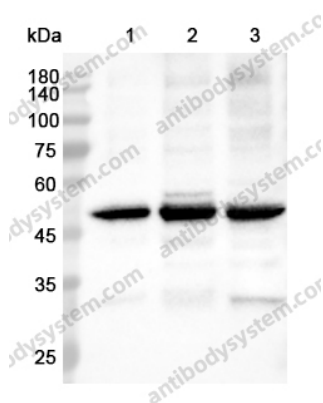


Anti-MAEA Polyclonal Antibody

Summary

Catalog No.	PHJ12701
Host species	Rabbit
Tested applications	ELISA: 1:4000-1:8000, IHC: 1:50-1:100, WB: 1:1000-1:4000
Species reactivity	Human, Mouse, Rat
Immunogen	E. coli - derived recombinant Human MAEA (Cys136-Pro379).
Form	Liquid
Storage buffer	0.01M PBS, pH 7.4, 50% Glycerol, 0.05% Proclin 300.
Clonality	Polyclonal
Isotype	IgG
Applications	ELISA, IHC, WB
Target	HLC-10,E3 ubiquitin-protein transferase MAEA,Erythroblast macrophage protein,Cell proliferation-inducing gene 5 protein,P44EMLP,MAEA,Human lung cancer oncogene 10 protein,EMP,Macrophage erythroblast attacher
Purification	Purified by antigen affinity column.
Accession	Q7L5Y9
Stability and Storage	Use a manual defrost freezer and avoid repeated freeze thaw cycles. Store at 2 to 8°C for frequent use. Store at -20 to -80°C for twelve months from the date of receipt.
Note	For research use only.

Data Image



Western blot

Various lysates were subjected to SDS PAGE followed by western blot with MAEA antibody (PHJ12701) at 0.61 µg/ml.

Lane 1: HepG2 cell lysate

Lane 2: Raji cell lysate

Lane 3: A549 cell lysate

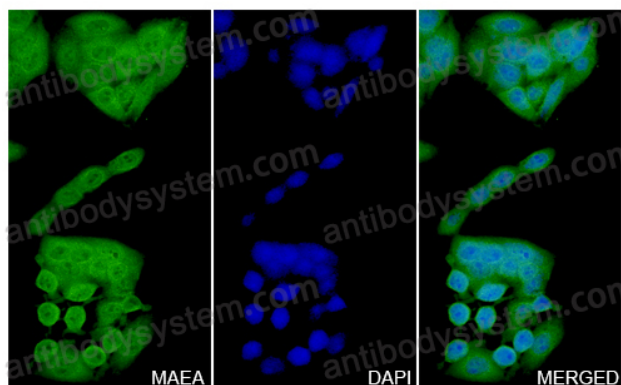
Second Ab: Goat Anti-Rabbit IgG H&L Polyclonal antibody, HRP (PTB96431) at 0.1 µg/mL.

Predict MW: 45 kDa

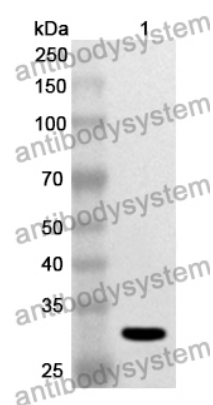
Observed MW: 50 kDa

MAEA in HepG2 Cell Line.

The HepG2 cells were fixed with 4% paraformaldehyde (20 min), and then blocked with 5% goat serum for 1h. And the cells were incubated for 2h at 37°C with MAEA (PHJ12701) at 12.2 µg/ml. The section was then incubated with Goat Anti-Rabbit IgG (Alexa Fluor-488) preabsorbed at 1/100 dilution (Shown in green) for 1 hour at room temperature. Nuclear DNA was labelled with DAPI (shown in blue).



Immunocytochemistry/ Immunofluorescence



Western Blot

Recombinant Protein lysates were subjected to SDS PAGE followed by western blot with MAEA antibody (PHJ12701) at 1 μ g/ml.

Lane 1: Recombinant Protein

Second Ab: Goat Anti-Rabbit IgG H&L Polyclonal antibody, HRP (PTB96431) at 0.1 μ g/mL.

Predict MW: 30 kDa

Observed MW: 30 kDa