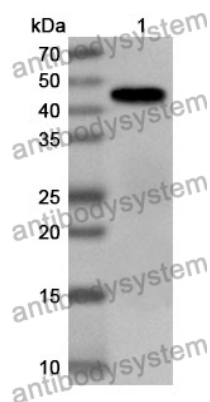


Anti-Mouse CLEC11A Polyclonal Antibody

Summary

Catalog No.	PMJ84401
Host species	Rabbit
Tested applications	ELISA: 1:4000-1:8000, IHC: 1:50-1:100, WB: 1:1000-1:4000
Species reactivity	Mouse
Immunogen	E. coli - derived recombinant Mouse CLEC11A (Gly185-Phe328).
Form	Liquid
Storage buffer	0.01M PBS, pH 7.4, 50% Glycerol, 0.05% Proclin 300.
Clonality	Polyclonal
Isotype	IgG
Applications	ELISA, IHC, WB
Target	p47, Lymphocyte secreted C-type lectin, CLECSF3, CLEC11A, Stem cell growth factor, SCGF, Ostelectin, C-type lectin superfamily member 3, LSLCL, C-type lectin domain family 11 member A
Purification	Purified by antigen affinity column.
Accession	O88200
Stability and Storage	Use a manual defrost freezer and avoid repeated freeze thaw cycles. Store at 2 to 8°C for frequent use. Store at -20 to -80°C for twelve months from the date of receipt.
Note	For research use only.

Data Image



Western Blot

Recombinant Protein lysates were subjected to SDS PAGE followed by western blot with CLEC11A antibody (PMJ84401) at 1 μ g/ml.

Lane 1: Recombinant protein

Second Ab: Goat Anti-Rabbit IgG H&L Polyclonal antibody, HRP (PTB96431) at 0.1 μ g/mL.

Predict MW: 44 kDa

Observed MW: 44 kDa