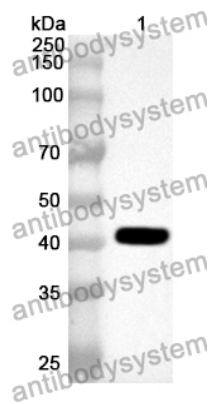


Anti-Mouse REG3G Polyclonal Antibody

Summary

Catalog No.	PMJ08501
Host species	Rabbit
Tested applications	ELISA: 1:4000-1:8000, IHC: 1:50-1:100, WB: 1:1000-1:4000
Species reactivity	Mouse
Immunogen	E. coli - derived recombinant Mouse REG3G (Ser44-Ala174).
Form	Liquid
Storage buffer	0.01M PBS, pH 7.4, 50% Glycerol, 0.05% Proclin 300.
Clonality	Polyclonal
Isotype	IgG
Applications	ELISA, IHC, WB
Target	Regenerating islet-derived protein 3-gamma, Reg III-gamma, Pancreatitis-associated protein 1B, Regenerating islet-derived protein III-gamma, Pancreatitis-associated protein IB, REG III, REG-3-gamma, REG3G, PAP1B, PAP IB, PAP-1B
Purification	Purified by antigen affinity column.
Accession	O09049
Stability and Storage	Use a manual defrost freezer and avoid repeated freeze thaw cycles. Store at 2 to 8°C for frequent use. Store at -20 to -80°C for twelve months from the date of receipt.
Note	For research use only.

Data Image



Western Blot

Recombinant Protein lysates were subjected to SDS PAGE followed by western blot with REG3G antibody (PMJ08501) at 1 μ g/ml.

Lane 1: Recombinant protein

Second Ab: Goat Anti-Rabbit IgG H&L Polyclonal antibody, HRP (PTB96431) at 0.1 μ g/mL.

Predict MW: 43 kDa

Observed MW: 43 kDa