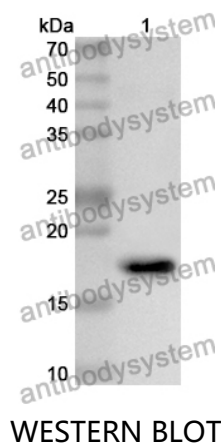


Anti-Histone H3 Polyclonal Antibody

Summary

Catalog No.	PHJ11901
Host species	Rabbit
Tested applications	ELISA: 1:4000-1:8000, IHC: 1:50-1:100, WB: 1:2000-1:8000
Species reactivity	Human
Immunogen	E. coli - derived recombinant Human H3C15 (Met1-Ala136).
Form	Liquid
Storage buffer	0.01M PBS, pH 7.4, 50% Glycerol, 0.05% Proclin 300.
Clonality	Polyclonal
Isotype	IgG
Applications	ELISA, IHC, WB
Target	HIST2H3A,H3C15,Histone H3/o,H3-clustered histone 14,H3-clustered histone 15,H3-clustered histone 13,H3F2,H3FM,Histone H3/m,HIST2H3D,HIST2H3C,Histone H3.2
Purification	Purified by antigen affinity column.
Accession	Q71DI3
Stability and Storage	Use a manual defrost freezer and avoid repeated freeze thaw cycles. Store at 2 to 8°C for frequent use. Store at -20 to -80°C for twelve months from the date of receipt.
Note	For research use only.

Data Image



Recombinant Protein lysates were subjected to SDS PAGE followed by western blot with H3C15 antibody (PHJ11901) at 1 µg/ml.

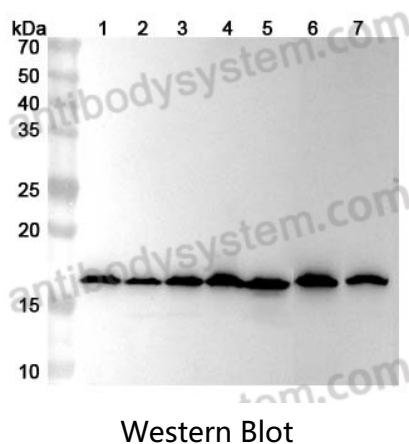
Lane 1: Recombinant protein

Second Ab: Goat Anti-Rabbit IgG H&L Polyclonal antibody, HRP (PTB96431) at 0.1 µg/mL.

Predict MW: 18 kDa

Observed MW: 18 kDa

Various lysates were subjected to SDS PAGE followed by western blot with H3C15 antibody (PHJ11901) at 1 µg/ml.



Lane 1: Hela cell lysate

Lane 2: HepG2 cell lysate

Lane 3: MCF-7 cell lysate

Lane 4: NIH3T3 cell lysate

Lane 5: A549 cell lysate

Lane 6: K562 cell lysate

Lane 7: Mouse spleen lysate

Second Ab: Goat Anti-Rabbit IgG H&L Polyclonal antibody, HRP (PTB96431) at 0.1 µg/mL.

Predict MW: 15 kDa

Observed MW: 17 kDa