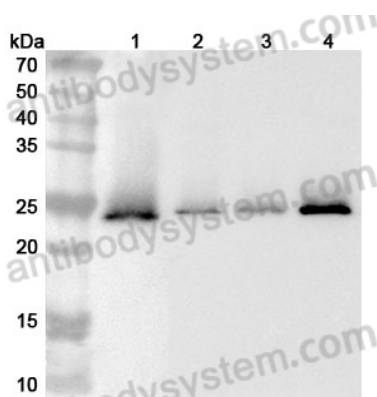


Anti-Human TMED9 Polyclonal Antibody

Summary

Catalog No.	PHN32501
Host species	Rabbit
Tested applications	ELISA: 1:4000-1:8000, IHC: 1:50-1:100, WB: 1:1000-1:4000
Species reactivity	Human
Immunogen	E. coli - derived recombinant Human TMED9 (Leu38-Gly146).
Form	Liquid
Storage buffer	0.01M PBS, pH 7.4, 50% Glycerol, 0.05% Proclin 300.
Clonality	Polyclonal
Isotype	IgG
Applications	ELISA, IHC, WB
Target	Glycoprotein 25L2, GP25L2, p24alpha2, GMP25, p24 family protein alpha-2, p25, Transmembrane emp24 domain-containing protein 9, TMED9
Purification	Purified by antigen affinity column.
Accession	Q9BVK6
Stability and Storage	Use a manual defrost freezer and avoid repeated freeze thaw cycles. Store at 2 to 8°C for frequent use. Store at -20 to -80°C for twelve months from the date of receipt.
Note	For research use only.

Data Image



Western Blot

Various lysates were subjected to SDS PAGE followed by western blot with TMED9 antibody (PHN32501) at 1 μ g/ml.

Lane 1: HepG2 cell lysate

Lane 2: THP-1 cell lysate

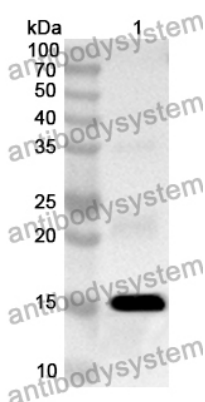
Lane 3: HepG2 cell lysate

Lane 4: MCF-7 cell lysate

Second Ab: Goat Anti-Rabbit IgG H&L Polyclonal antibody, HRP (PTB96431) at 0.1 μ g/mL.

Predict MW: 27 kDa

Observed MW: 24 kDa



Western Blot

Recombinant Protein lysates were subjected to SDS PAGE followed by western blot with TMED9 antibody (PHN32501) at 1 μ g/ml.

Lane 1: Recombinant protein

Second Ab: Goat Anti-Rabbit IgG H&L Polyclonal antibody, HRP (PTB96431) at 0.1 μ g/mL.

Predict MW: 15 kDa

Observed MW: 15 kDa