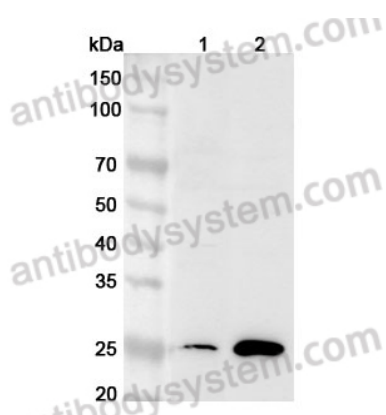


Anti-Human CDCA3 Polyclonal Antibody

Summary

Catalog No.	PHN31801
Host species	Rabbit
Tested applications	ELISA: 1:4000-1:8000, IHC: 1:50-1:100, WB: 1:1000-1:4000
Species reactivity	Human
Immunogen	E. coli - derived recombinant Human CDCA3 (Ser119-Ser268).
Form	Liquid
Storage buffer	0.01M PBS, pH 7.4, 50% Glycerol, 0.05% Proclin 300.
Clonality	Polyclonal
Isotype	IgG
Applications	ELISA, IHC, WB
Target	C8, TOME-1, CDCA3, GRCC8, Trigger of mitotic entry protein 1, Cell division cycle-associated protein 3, Gene-rich cluster protein C8, TOME1
Purification	Purified by antigen affinity column.
Accession	Q99618
Stability and Storage	Use a manual defrost freezer and avoid repeated freeze thaw cycles. Store at 2 to 8°C for frequent use. Store at -20 to -80°C for twelve months from the date of receipt.
Note	For research use only.

Data Image



Western Blot

Various lysates were subjected to SDS PAGE followed by western blot with CDCA3 antibody (PHN31801) at 1 μ g/ml.

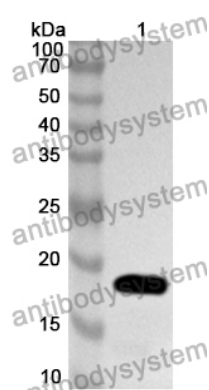
Lane 1: C2C12 cell lysate

Lane 2: Mouse spleen lysate

Second Ab: Goat Anti-Rabbit IgG H&L Polyclonal antibody, HRP (PTB96431) at 0.1 μ g/mL.

Predict MW: 29 kDa

Observed MW: 26 kDa



Western Blot

Recombinant Protein lysates were subjected to SDS PAGE followed by western blot with CDCA3 antibody (PHN31801) at 1 μ g/ml.

Lane 1: Recombinant protein

Second Ab: Goat Anti-Rabbit IgG H&L Polyclonal antibody, HRP (PTB96431) at 0.1 μ g/mL.

Predict MW: 19 kDa

Observed MW: 19 kDa