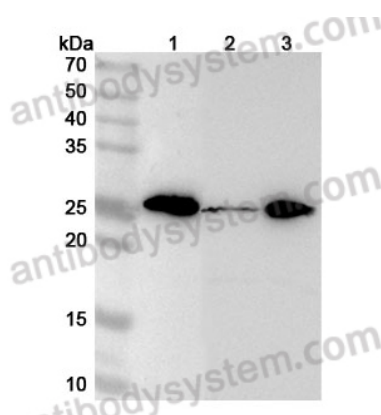


Anti-Human MRPL48 Polyclonal Antibody

Summary

Catalog No.	PHN30901
Host species	Rabbit
Tested applications	ELISA: 1:4000-1:8000, IHC: 1:50-1:100, WB: 1:1000-1:4000
Species reactivity	Human
Immunogen	E. coli - derived recombinant Human MRPL48 (Val90-Lys212).
Form	Liquid
Storage buffer	0.01M PBS, pH 7.4, 50% Glycerol, 0.05% Proclin 300.
Clonality	Polyclonal
Isotype	IgG
Applications	ELISA, IHC, WB
Target	Mitochondrial large ribosomal subunit protein mL48, MRPL48, 39S ribosomal protein L48, mitochondrial, MRP-L48, L48mt
Purification	Purified by antigen affinity column.
Accession	Q96GC5
Stability and Storage	Use a manual defrost freezer and avoid repeated freeze thaw cycles. Store at 2 to 8°C for frequent use. Store at -20 to -80°C for twelve months from the date of receipt.
Note	For research use only.

Data Image



Western Blot

Various lysates were subjected to SDS PAGE followed by western blot with MRPL48 antibody (PHN30901) at 1 μ g/ml.

Lane 1: Jurkat cell lysate

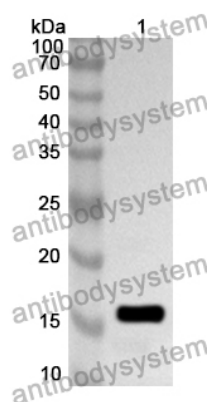
Lane 2: MCF-7 cell lysate

Lane 3: K562 cell lysate

Second Ab: Goat Anti-Rabbit IgG H&L Polyclonal antibody, HRP (PTB96431) at 0.1 μ g/mL.

Predict MW: 24 kDa

Observed MW: 25 kDa



Western Blot

Recombinant Protein lysates were subjected to SDS PAGE followed by western blot with MRPL48 antibody (PHN30901) at 1 μ g/ml.

Lane 1: Recombinant protein

Second Ab: Goat Anti-Rabbit IgG H&L Polyclonal antibody, HRP (PTB96431) at 0.1 μ g/mL.

Predict MW: 16 kDa

Observed MW: 16 kDa