

Anti-Human CELF1 Polyclonal Antibody

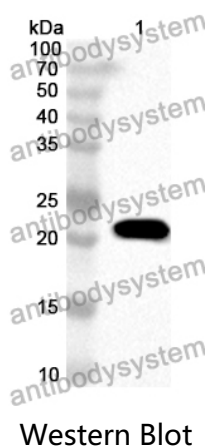
Summary

Catalog No.	PHN29801
Host species	Rabbit
Tested applications	ELISA: 1:4000-1:8000, IHC: 1:50-1:100, WB: 1:1000-1:4000
Species reactivity	Human
Immunogen	E. coli - derived recombinant Human CELF1 (Lys17-Asp187).
Form	Liquid
Storage buffer	0.01M PBS, pH 7.4, 50% Glycerol, 0.05% Proclin 300.
Clonality	Polyclonal
Isotype	IgG
Applications	ELISA, IHC, WB
Target	CELF-1, CUGBP1, CUGBP Elav-like family member 1, Deadenylation factor CUG-BP, Embryo deadenylation element-binding protein homolog, EDEN-BP homolog, CELF1, RNA-binding protein BRUNOL-2, 50 kDa nuclear polyadenylated RNA-binding protein, CUG triplet repeat RNA-binding protein 1, BRUNOL2, CUGBP, NAB50, CUG-BP- and ETR-3-like factor 1, Bruno-like protein 2, CUG-BP1
Purification	Purified by antigen affinity column.
Accession	Q92879
Stability and Storage	Use a manual defrost freezer and avoid repeated freeze thaw cycles. Store at 2 to 8°C for frequent use. Store at -20 to -80°C for twelve months from the date of receipt.

Note

For research use only.

Data Image



Recombinant Protein lysates were subjected to SDS PAGE followed by western blot with CELF1 antibody (PHN29801) at 1 µg/ml.

Lane 1: Recombinant protein

Second Ab: Goat Anti-Rabbit IgG H&L Polyclonal antibody, HRP (PTB96431) at 0.1 µg/mL.

Predict MW: 22 kDa

Observed MW: 22 kDa