

# Anti-Human CADM3/NECL-1/TSLL1 Polyclonal Antibody

## Summary

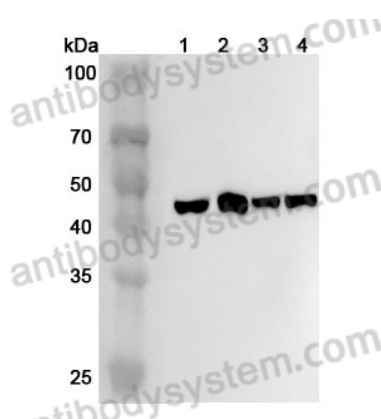
---

<b>Catalog No.</b>	PHK84301
<b>Host species</b>	Rabbit
<b>Tested applications</b>	ELISA: 1:4000-1:8000, IHC: 1:50-1:100, WB: 1:1000-1:4000
<b>Species reactivity</b>	Human
<b>Immunogen</b>	E. coli - derived recombinant Human CADM3/NECL-1/TSLL1 (Asn25-His330).
<b>Form</b>	Liquid
<b>Storage buffer</b>	0.01M PBS, pH 7.4, 50% Glycerol, 0.05% Proclin 300.
<b>Clonality</b>	Polyclonal
<b>Isotype</b>	IgG
<b>Applications</b>	ELISA, IHC, WB
<b>Target</b>	TSLL1, Immunoglobulin superfamily member 4B, Brain immunoglobulin receptor, NECL1, CADM3, Synaptic cell adhesion molecule 3, Cell adhesion molecule 3, IgSF4B, NECL-1, Nectin-like protein 1, TSLC1-like protein 1, SynCAM3, SYNCAM3, IGSF4B
<b>Purification</b>	Purified by antigen affinity column.
<b>Accession</b>	Q8N126
<b>Stability and Storage</b>	Use a manual defrost freezer and avoid repeated freeze thaw cycles. Store at 2 to 8°C for frequent use. Store at -20 to -80°C for twelve months from the date of receipt.

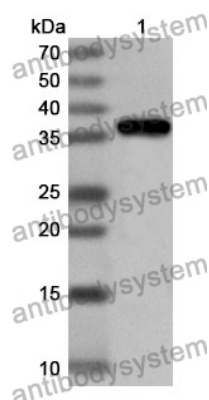
## Note

For research use only.

## Data Image



Western Blot



Western Blot

Various lysates were subjected to SDS PAGE followed by western blot with CADM3 antibody (PHK84301) at 1  $\mu$ g/ml.

Lane 1: Mouse brain lysate

Lane 2: Mouse cerebellum lysate

Lane 3: Rat brain lysate

Lane 4: Rat cerebellum lysate

Second Ab: Goat Anti-Rabbit IgG H&L Polyclonal antibody, HRP (PTB96431) at 0.1  $\mu$ g/mL.

Predict MW: 43 kDa

Observed MW: 47 kDa

Recombinant Protein lysates were subjected to SDS PAGE followed by western blot with CADM3/NECL-1/TSLL1 antibody (PHK84301) at 1  $\mu$ g/ml.

Lane 1: Recombinant protein

Second Ab: Goat Anti-Rabbit IgG H&L Polyclonal antibody, HRP (PTB96431) at 0.1  $\mu$ g/mL.

Predict MW: 36 kDa

Observed MW: 36 kDa