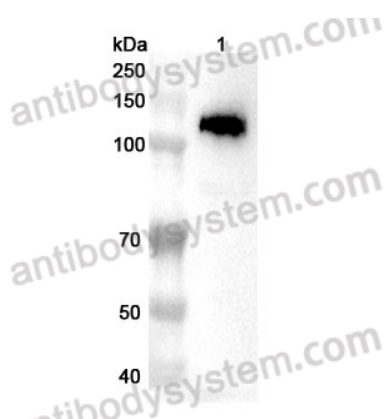


Anti-PKN1 Polyclonal Antibody

Summary

Catalog No.	PHH26901
Host species	Rabbit
Tested applications	ELISA: 1:4000-1:8000, IHC: 1:50-1:100, WB: 1:1000-1:4000
Species reactivity	Human, Mouse, Rat
Immunogen	E. coli - derived recombinant Human PKN1 (Ser608-Gln871).
Form	Liquid
Storage buffer	0.01M PBS, pH 7.4, 50% Glycerol, 0.05% Proclin 300.
Clonality	Polyclonal
Isotype	IgG
Applications	ELISA, IHC, WB
Target	Protein kinase C-like PKN, Serine/threonine-protein kinase N1, PRK1, Serine-threonine protein kinase N, PKN, Protease-activated kinase 1, PRKCL1, PKN1, Protein-kinase C-related kinase 1, PAK-1, Protein kinase PKN-alpha, PAK1, Protein kinase C-like 1
Purification	Purified by antigen affinity column.
Accession	Q16512
Stability and Storage	Use a manual defrost freezer and avoid repeated freeze thaw cycles. Store at 2 to 8°C for frequent use. Store at -20 to -80°C for twelve months from the date of receipt.
Note	For research use only.

Data Image



Western Blot

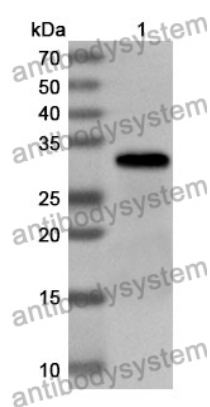
Various lysates were subjected to SDS PAGE followed by western blot with PKN1 antibody (PHH26901) at 1 μ g/ml.

Lane 1: MDA-MB-231 cell lysate

Second Ab: Goat Anti-Rabbit IgG H&L Polyclonal antibody, HRP (PTB96431) at 0.1 μ g/mL.

Predict MW: 104 kDa

Observed MW: 130 kDa



Western Blot

Recombinant Protein lysates were subjected to SDS PAGE followed by western blot with PKN1 antibody (PHH26901) at 1 μ g/ml.

Lane 1: Recombinant protein

Second Ab: Goat Anti-Rabbit IgG H&L Polyclonal antibody, HRP (PTB96431) at 0.1 μ g/mL.

Predict MW: 32 kDa

Observed MW: 32 kDa