

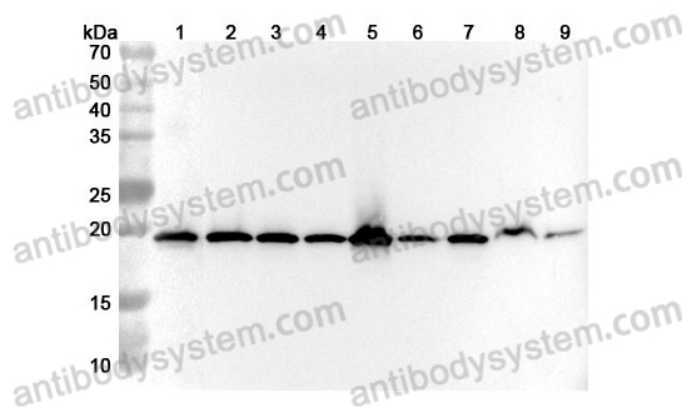
Anti-Human RPL24 Polyclonal Antibody

Summary

Catalog No.	PHF75001
Host species	Rabbit
Tested applications	ELISA: 1:4000-1:8000, IHC: 1:50-1:100, WB: 1:1000-1:4000
Species reactivity	Human
Immunogen	E. coli - derived recombinant Human RPL24 (Met1-Lys131).
Form	Liquid
Storage buffer	0.01M PBS, pH 7.4, 50% Glycerol, 0.05% Proclin 300.
Clonality	Polyclonal
Isotype	IgG
Applications	ELISA, IHC, WB
Target	Large ribosomal subunit protein eL24, 60S ribosomal protein L30, 60S ribosomal protein L24, RPL24
Purification	Purified by antigen affinity column.
Accession	P83731
Stability and Storage	Use a manual defrost freezer and avoid repeated freeze thaw cycles. Store at 2 to 8°C for frequent use. Store at -20 to -80°C for twelve months from the date of receipt.
Note	For research use only.

Data Image

Various lysates were subjected to SDS PAGE followed by western blot with RPL24 antibody (PHF75001) at 1 µg/ml.



Western Blot

Lane 1: RAW264.7 cell lysate

Lane 2: Jurkat cell lysate

Lane 3: 293T cell lysate

Lane 4: Hela cell lysate

Lane 5: HepG2 cell lysate

Lane 6: NIH3T3 cell lysate

Lane 7: HT-29 cell lysate

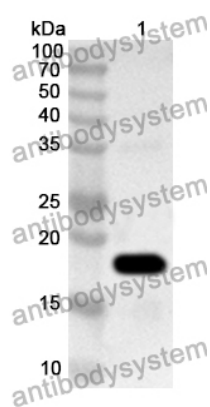
Lane 8: Mouse testis lysate

Lane 9: Rat testis lysate

Second Ab: Goat Anti-Rabbit IgG H&L Polyclonal antibody, HRP (PTB96431) at 0.1 µg/mL.

Predict MW: 18 kDa

Observed MW: 19 kDa



Western Blot

Recombinant Protein lysates were subjected to SDS PAGE followed by western blot with RPL24 antibody (PHF75001) at 1 µg/ml.

Lane 1: Recombinant protein

Second Ab: Goat Anti-Rabbit IgG H&L Polyclonal antibody, HRP (PTB96431) at 0.1 µg/mL.

Predict MW: 17 kDa

Observed MW: 17 kDa