

# Anti-Human YWHAG Polyclonal Antibody

## Summary

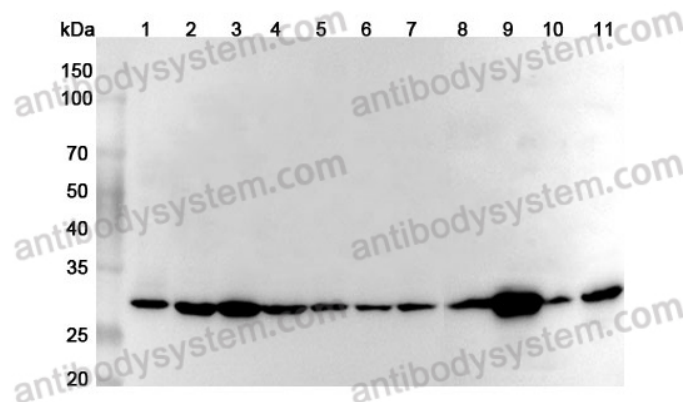
---

<b>Catalog No.</b>	PHF47701
<b>Host species</b>	Rabbit
<b>Tested applications</b>	ELISA: 1:4000-1:8000, IHC: 1:50-1:100, WB: 1:1000-1:4000
<b>Species reactivity</b>	Human
<b>Immunogen</b>	E. coli - derived recombinant Human YWHAG (Met1-Asn247).
<b>Form</b>	Liquid
<b>Storage buffer</b>	0.01M PBS, pH 7.4, 50% Glycerol, 0.05% Proclin 300.
<b>Clonality</b>	Polyclonal
<b>Isotype</b>	IgG
<b>Applications</b>	ELISA, IHC, WB
<b>Target</b>	Protein kinase C inhibitor protein 1, 14-3-3 protein gamma, YWHAG, KCIP-1
<b>Purification</b>	Purified by antigen affinity column.
<b>Accession</b>	P61981
<b>Stability and Storage</b>	Use a manual defrost freezer and avoid repeated freeze thaw cycles. Store at 2 to 8°C for frequent use. Store at -20 to -80°C for twelve months from the date of receipt.
<b>Note</b>	For research use only.

## Data Image

---

Various lysates were subjected to SDS PAGE followed by western blot with YWHAG antibody (PHF47701) at 1 µg/ml.



Western Blot

Lane 1: NIH3T3 cell lysate

Lane 2: A431 cell lysate

Lane 3: K562 cell lysate

Lane 4: A549 cell lysate

Lane 5: 293T cell lysate

Lane 6: Jurkat cell lysate

Lane 7: U251 cell lysate

Lane 8: Mouse lung lysate

Lane 9: Rat brain lysate

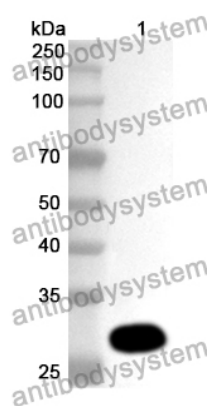
Lane 10: Rat testis lysate

Lane 11: Rat lung lysate

Second Ab: Goat Anti-Rabbit IgG H&L Polyclonal antibody, HRP (PTB96431) at 0.1 µg/mL.

Predict MW: 28 kDa

Observed MW: 28 kDa



Western Blot

Recombinant Protein lysates were subjected to SDS PAGE followed by western blot with YWHAG antibody (PHF47701) at 1 µg/ml.

Lane 1: Recombinant protein

Second Ab: Goat Anti-Rabbit IgG H&L Polyclonal antibody, HRP (PTB96431) at 0.1 µg/mL.

Predict MW: 30 kDa

Observed MW: 30 kDa