

Anti-Human CD172b/SIRPB1 Polyclonal Antibody

Summary

Catalog No.	PHA06802
Host species	Rabbit
Tested applications	ELISA: 1:4000-1:8000, IHC: 1:50-1:100, WB: 1:1000-1:4000
Species reactivity	Human
Immunogen	E. coli - derived recombinant Human CD172b/SIRPB1 (Glu39-Glu347).
Form	Liquid
Storage buffer	0.01M PBS, pH 7.4, 50% Glycerol, 0.05% Proclin 300.
Clonality	Polyclonal
Isotype	IgG
Applications	ELISA, IHC, WB
Target	SIRP-beta-1, Signal-regulatory protein beta-1, CD172 antigen-like family member B, SIRPB1, CD172b
Purification	Purified by antigen affinity column.
Accession	O00241
Stability and Storage	Use a manual defrost freezer and avoid repeated freeze thaw cycles. Store at 2 to 8°C for frequent use. Store at -20 to -80°C for twelve months from the date of receipt.
Note	For research use only.

Data Image



Western Blot

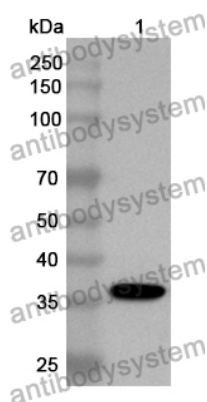
Various lysates were subjected to SDS PAGE followed by western blot with SIRPB1 antibody (PHA06802) at 1 µg/ml.

- Lane 1: U937 cell lysate
- Lane 2: PC-3 cell lysate
- Lane 3: A549 cell lysate
- Lane 4: HUVEC cell lysate
- Lane 5: Hela cell lysate
- Lane 6: Jurkat cell lysate
- Lane 7: Mouse brain lysate
- Lane 8: Mouse heart lysate
- Lane 9: Mouse cerebellum lysate
- Lane 10: Rat brain lysate
- Lane 11: Rat heart lysate
- Lane 12: Rat cerebellum lysate

Second Ab: Goat Anti-Rabbit IgG H&L Polyclonal antibody, HRP (PTB96431) at 0.1 µg/mL.

Predict MW: 43 kDa

Observed MW: 43 kDa



Western Blot

Recombinant Protein lysates were subjected to SDS PAGE followed by western blot with CD172b/SIRPB1 antibody (PHA06802) at 1 µg/ml.

Lane 1: Recombinant protein

Second Ab: Goat Anti-Rabbit IgG H&L Polyclonal antibody, HRP (PTB96431) at 0.1 µg/mL.

Predict MW: 36 kDa

Observed MW: 36 kDa