

Anti-BVDV E2 glycoprotein Polyclonal Antibody

Summary

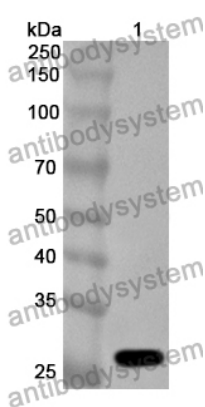
Catalog No.	PVV14702
Host species	Rabbit
Tested applications	ELISA: 1:4000-1:8000, IHC: 1:50-1:200, IF: 1:50-1:200, WB: 1:500-1:4000
Species reactivity	Bovine viral diarrhea virus (BVDV) (Mucosal disease virus)
Immunogen	E. coli - derived recombinant BVDV (Mucosal disease virus) E2 glycoprotein (Cys1-Asp218).
Form	Liquid
Storage buffer	0.01M PBS, pH 7.4, 50% Glycerol, 0.05% Proclin 300.
Concentration	0.72 mg/ml
Clonality	Polyclonal
Isotype	IgG
Applications	ELISA, IHC, IF, WB
Target	Genome polyprotein, N-terminal protease, N-pro, 3.4.22.-, Autoprotease p20, Capsid protein C, E(rns) glycoprotein, gp44/48, Envelope glycoprotein E1, gp33, Envelope glycoprotein E2, gp55, Viroporin p7, Non-structural protein 2-3, Cysteine protease NS2, 3.4.22.-, Non-structural protein 2, Serine protease NS3, 3.4.21.113, 3.6.1.15, 3.6.4.13, Non-structural protein 3, Non-structural protein 4A, NS4A, Non-structural protein 4B, NS4B, Non-structural protein 5A, NS5A, RNA-directed RNA polymerase, 2.7.7.48, NS5B
Purification	Purified by antigen affinity column.
Accession	AGC12054.1

Stability and Storage

Use a manual defrost freezer and avoid repeated freeze thaw cycles. Store at 2 to 8°C for frequent use. Store at -20 to -80°C for twelve months from the date of receipt.

Note

For research use only.

Data Image

Western Blot

Recombinant Protein lysates were subjected to SDS PAGE followed by western blot with E2 glycoprotein antibody (PVV14702) at 1 µg/ml.

Lane 1: Recombinant protein

Second Ab: Goat Anti-Rabbit IgG H&L Polyclonal antibody, HRP (PTB96431) at 0.1 µg/mL.

Predict MW: 27 kDa

Observed MW: 27 kDa