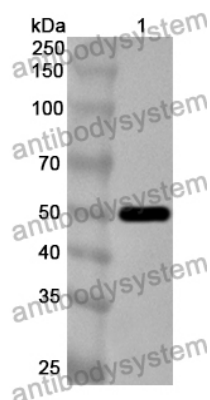


Anti-PEDV N/Nucleoprotein Polyclonal Antibody

Summary

Catalog No.	PVV28803
Host species	Rabbit
Tested applications	ELISA: 1:4000-1:8000, IHC: 1:50-1:200, WB: 1:500-1:4000
Species reactivity	Porcine epidemic diarrhea virus (PEDV)
Immunogen	E. coli - derived recombinant PEDV N/Nucleoprotein (Pro15-Asn441).
Form	Liquid
Storage buffer	0.01M PBS, pH 7.4, 50% Glycerol, 0.05% Proclin 300.
Concentration	0.93 mg/ml
Clonality	Polyclonal
Isotype	IgG
Applications	ELISA, IHC, WB
Target	Nucleoprotein, Nucleocapsid protein, NC, Protein N, N, 6
Purification	Purified by antigen affinity column.
Accession	B7UCM9
Stability and Storage	Use a manual defrost freezer and avoid repeated freeze thaw cycles. Store at 2 to 8°C for frequent use. Store at -20 to -80°C for twelve months from the date of receipt.
Note	For research use only.

Data Image



Western Blot

Recombinant Protein lysates were subjected to SDS PAGE followed by western blot with N/Nucleoprotein antibody (PVV28803) at 1 µg/ml.

Lane 1: Recombinant protein

Second Ab: Goat Anti-Rabbit IgG H&L Polyclonal antibody, HRP (PTB96431) at 0.1 µg/mL.

Predict MW: 49 kDa

Observed MW: 49 kDa