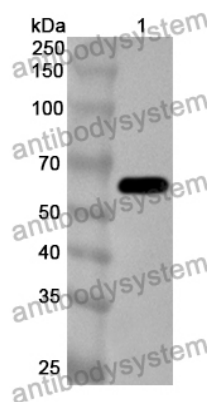


Anti-Escherichia coli pcnB/Poly(A) polymerase I Polyclonal Antibody

Summary

Catalog No.	PXX12801
Host species	Rabbit
Tested applications	ELISA: 1:4000-1:8000, WB: 1:1000-1:4000
Species reactivity	Escherichia coli (strain K12)
Immunogen	E. coli - derived recombinant Escherichia coli pcnB/Poly(A) polymerase I (Leu13-Ala465).
Form	Liquid
Storage buffer	0.01M PBS, pH 7.4, 50% Glycerol, 0.05% Proclin 300.
Clonality	Polyclonal
Isotype	IgG
Applications	ELISA, IHC, WB
Target	Poly(A) polymerase I, PAP I, 2.7.7.19, Plasmid copy number protein, pcnB, b0143, JW5808, Escherichia coli (strain K12)
Purification	Purified by antigen affinity column.
Accession	P0ABF1
Stability and Storage	Use a manual defrost freezer and avoid repeated freeze thaw cycles. Store at 2 to 8°C for frequent use. Store at -20 to -80°C for twelve months from the date of receipt.
Note	For research use only.

Data Image



Western Blot

Recombinant Protein lysates were subjected to SDS PAGE followed by western blot with pcnB/Poly(A) polymerase I antibody (PXX12801) at 1 μ g/ml.

Lane 1: Recombinant protein

Second Ab: Goat Anti-Rabbit IgG H&L Polyclonal antibody, HRP (PTB96431) at 0.1 μ g/mL.

Predict MW: 66 kDa

Observed MW: 66 kDa