

Anti-Clostridium tetani tetX/Tetanus toxin/TeNT Polyclonal Antibody

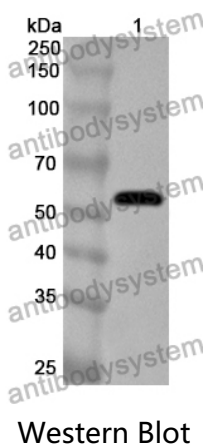
Summary

| | |
|------------------------------|--|
| Catalog No. | PXX08801 |
| Host species | Rabbit |
| Tested applications | ELISA: 1:4000-1:8000, WB: 1:1000-1:4000 |
| Species reactivity | Clostridium tetani (strain Massachusetts / E88) |
| Immunogen | E. coli - derived recombinant Clostridium tetani tetX/Tetanus toxin/TeNT (Met1-Ser458). |
| Form | Liquid |
| Storage buffer | 0.01M PBS, pH 7.4, 50% Glycerol, 0.05% Proclin 300. |
| Clonality | Polyclonal |
| Isotype | IgG |
| Applications | ELISA, IHC, WB |
| Target | Tetanus toxin, 3.4.24.68, Tentoxylisin, Tetanus toxin light chain, Tetanus toxin chain L, Tetanus toxin heavy chain, Tetanus toxin chain H, tetX, CTC_p60, Clostridium tetani (strain Massachusetts / E88) |
| Purification | Purified by antigen affinity column. |
| Accession | P04958 |
| Stability and Storage | Use a manual defrost freezer and avoid repeated freeze thaw cycles. Store at 2 to 8°C for frequent use. Store at -20 to -80°C for twelve months from the date of receipt. |

Note

For research use only.

Data Image



Recombinant Protein lysates were subjected to SDS PAGE followed by western blot with tetX/Tetanus toxin/TeNT antibody (PXX08801) at 1 µg/ml.

Lane 1: Recombinant protein

Second Ab: Goat Anti-Rabbit IgG H&L Polyclonal antibody, HRP (PTB96431) at 0.1 µg/mL.

Predict MW: 55 kDa

Observed MW: 55 kDa