

Recombinant Mouse CLEC6A Protein, N-His

Summary

| | |
|-----------------------------------|--|
| Catalog No. | YMN00601 |
| Alternative Names | DC-associated C-type lectin 2, DECTIN2, Dendritic cell-associated C-type lectin 2, CLECSF10, CLEC6A, C-type lectin domain family 6 member A, C-type lectin superfamily member 10, Dectin-2 |
| Form | Lyophilized |
| Storage buffer | Lyophilized from a solution in PBS pH 7.4, 0.02% NLS, 1mM EDTA, 4% Trehalose, 1% Mannitol. |
| Purity | >90% as determined by SDS-PAGE. |
| Applications | ELISA, Immunogen, SDS-PAGE, WB, Bioactivity testing in progress |
| Endotoxin level | Please contact with the lab for this information. |
| Expression system | E. coli |
| Accession | Q9JKF4 |
| Protein length | Ile44-Leu209 |
| Nature | Recombinant |
| Predicted molecular weight | 21.78 kDa |
| Stability and Storage | Use a manual defrost freezer and avoid repeated freeze thaw cycles. Store at 2 to 8°C for frequent use. Store at -20 to -80°C for twelve months from the date of receipt. |
| Reconstitution | Reconstitute in sterile water for a stock solution. A copy of datasheet will be provided with the products, please refer to it for details. |
| Species | Mus musculus (Mouse) |

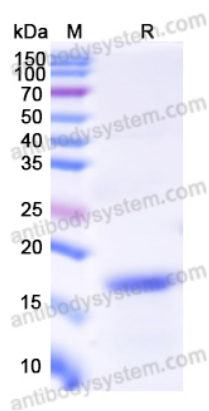
Shipping

In general, proteins are provided as lyophilized powder/frozen liquid. They are shipped out with dry ice/blue ice unless customers require otherwise.

Note

For research use only.

Data Image



SDS-PAGE

SDS-PAGE for Recombinant Mouse CLEC6A protein