

Research Grade Inclacumab

Summary

Catalog No.	DHD15102
Alternative Names	LC1004-002, RO4905417, CAS: 1256258-86-2
Clone ID	Inclacumab
Host species	Human
Species reactivity	Human
Form	Liquid
Storage buffer	0.01M PBS, pH 7.4.
Concentration	1.68 mg/ml
Purity	>95% as determined by SDS-PAGE.
Clonality	Monoclonal
Isotype	IgG4-kappa
Applications	Research Grade Biosimilar
Target	Leukocyte-endothelial cell adhesion molecule 3, Platelet activation dependent granule-external membrane protein, Granule membrane protein 140, GMP-140, CD62P, SELP, GRMP, PADGEM, CD62 antigen-like family member P, LECAM3, P-selectin, GMRP
Purification	Protein A/G purified from cell culture supernatant.
Endotoxin level	Please contact with the lab for this information.
Expression system	Mammalian Cells
Accession	P16109

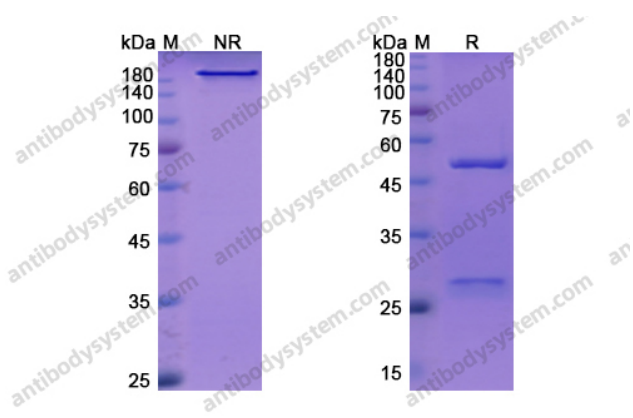
Stability and Storage

Use a manual defrost freezer and avoid repeated freeze-thaw cycles.
Store at 4°C short term (1-2 weeks). Store at -20°C 12 months. Store at -80°C long term.

Note

For research use only. Not suitable for clinical or therapeutic use.

Data Image



SDS PAGE for Inclacumab

SDS-PAGE