

Recombinant Human MAT1A Protein, N-His

Summary

Catalog No.	YHF81401
Alternative Names	MAT 1, Methionine adenosyltransferase 1, AdoMet synthase 1, Methionine adenosyltransferase I/III, MATA1, AMS1, S-adenosylmethionine synthase isoform type-1, MAT1A, MAT-I/III
Form	Lyophilized
Storage buffer	Lyophilized from a solution in PBS pH 7.4, 0.02% NLS, 1mM EDTA, 4% Trehalose, 1% Mannitol.
Purity	>90% as determined by SDS-PAGE.
Applications	ELISA, Immunogen, SDS-PAGE, WB, Bioactivity testing in progress
Endotoxin level	Please contact with the lab for this information.
Expression system	E. coli
Accession	Q00266
Protein length	Gly16-Phe395
Nature	Recombinant
Predicted molecular weight	44.39 kDa
Stability and Storage	Use a manual defrost freezer and avoid repeated freeze thaw cycles. Store at 2 to 8°C for frequent use. Store at -20 to -80°C for twelve months from the date of receipt.
Reconstitution	Reconstitute in sterile water for a stock solution.
Species	Homo sapiens (Human)

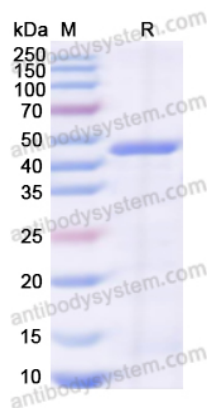
Shipping

In general, proteins are provided as lyophilized powder/frozen liquid. They are shipped out with dry ice/blue ice unless customers require otherwise.

Note

For research use only.

Data Image



SDS-PAGE

SDS-PAGE for Recombinant Human MAT1A protein