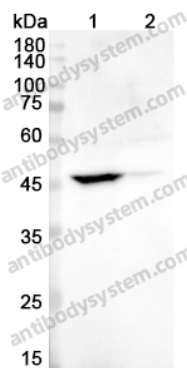


Anti-IRF4 Polyclonal Antibody

Summary

Catalog No.	PHH06201
Host species	Rabbit
Tested applications	ELISA: 1:4000-1:8000, IHC: 1:50-1:100, WB: 1:1000-1:4000
Species reactivity	Human, Mouse, Rat
Immunogen	E. coli - derived recombinant Human IRF4 (Glu130-Glu451).
Form	Liquid
Storage buffer	0.01M PBS, pH 7.4, 50% Glycerol, 0.05% Proclin 300.
Clonality	Polyclonal
Isotype	IgG
Applications	ELISA, IHC, WB
Target	IRF-4,NF-EM5,MUM1,LSIRF,IRF4,Multiple myeloma oncogene 1,Interferon regulatory factor 4,Lymphocyte-specific interferon regulatory factor
Purification	Purified by antigen affinity column.
Accession	Q15306
Stability and Storage	Use a manual defrost freezer and avoid repeated freeze thaw cycles. Store at 2 to 8°C for frequent use. Store at -20 to -80°C for twelve months from the date of receipt.
Note	For research use only.

Data Image



Western blot

Various lysates were subjected to SDS PAGE followed by western blot with IRF4 antibody (PHH06201) at 1.14 μ g/ml.

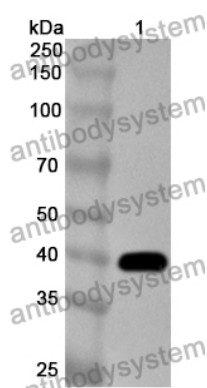
Lane 1: THP1 cell lysate

Lane 2: HepG2 cell lysate

Second Ab: Goat Anti-Rabbit IgG H&L Polyclonal antibody, HRP (PTB96431) at 0.1 μ g/mL.

Predict MW: 51 kDa

Observed MW: 51 kDa



Western Blot

Recombinant Protein lysates were subjected to SDS PAGE followed by western blot with IRF4 antibody (PHH06201) at 1 μ g/ml.

Lane 1: Recombinant Protein

Second Ab: Goat Anti-Rabbit IgG H&L Polyclonal antibody, HRP (PTB96431) at 0.1 μ g/mL.

Predict MW: 39 kDa

Observed MW: 39 kDa