

# Research Grade Efpegerglucagon

## Summary

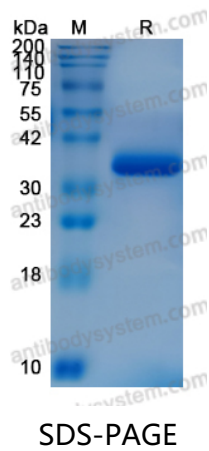
---

|                              |   |
|------------------------------|---|
| <b>Catalog No.</b>           | DHB93501  |
| <b>Alternative Names</b>     | CAS: 2766774-81-4   |
| <b>Clone ID</b>              | Efpegerglucagon   |
| <b>Species reactivity</b>    | Human   |
| <b>Form</b>                  | Lyophilized   |
| <b>Storage buffer</b>        | Lyophilized from a solution in PBS pH 7.4, 5% Trehalose, 5% Mannitol.   |
| <b>Purity</b>                | >95% as determined by SDS-PAGE.   |
| <b>Isotype</b>               | Synthetic glucagon peptide analogue conjugated with human IgG4 Fc fragment  |
| <b>Applications</b>          | Research Grade Biosimilar   |
| <b>Target</b>                | GLP-1(7-36), Incretin hormone, GLP-2, GCG, GLP-1(7-37), OXM, Pro-glucagon, GLP-1, GRPP, OXY   |
| <b>Purification</b>          | Protein A/G purified from cell culture supernatant.   |
| <b>Endotoxin level</b>       | Please contact with the lab for this information.   |
| <b>Expression system</b>     | Mammalian Cells   |
| <b>Accession</b>             | P01275  |
| <b>Stability and Storage</b> | Use a manual defrost freezer and avoid repeated freeze-thaw cycles.<br>Store at 4°C short term (1-2 weeks). Store at -20°C 12 months. Store at -80°C long term. |
| <b>Reconstitution</b>        | Reconstitute in sterile water for a stock solution.   |

**Note** For research use only. Not suitable for clinical or therapeutic use.

## Data Image

---



SDS PAGE for Epepegerglucagon