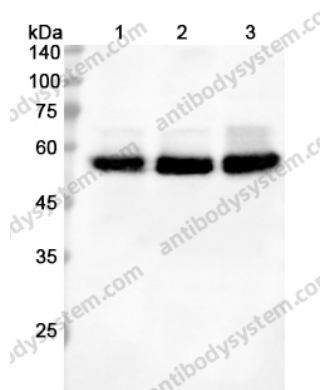


Anti-CASP8 Polyclonal Antibody

Summary

Catalog No.	PHG90201
Host species	Rabbit
Tested applications	ELISA: 1:4000-1:8000, IHC: 1:50-1:100, WB: 1:1000-1:4000
Species reactivity	Human
Immunogen	E. coli - derived recombinant Human CASP8 (Ser217-Asp479).
Form	Liquid
Storage buffer	0.01M PBS, pH 7.4, 50% Glycerol, 0.05% Proclin 300.
Clonality	Polyclonal
Isotype	IgG
Applications	ELISA, IHC, WB
Target	CAP4,MCH5,FADD-homologous ICE/ced-3-like protease,FLICE,Apoptotic cysteine protease,MORT1-associated ced-3 homolog,MACH,FADD-like ICE,ICE-like apoptotic protease 5,CASP8,CASP-8,Caspase-8,Apoptotic protease Mch-5
Purification	Purified by antigen affinity column.
Accession	Q14790
Stability and Storage	Use a manual defrost freezer and avoid repeated freeze thaw cycles. Store at 2 to 8°C for frequent use. Store at -20 to -80°C for twelve months from the date of receipt.
Note	For research use only.

Data Image



Western blot

Various lysates were subjected to SDS PAGE followed by western blot with CASP8 antibody (PHG90201) at 0.89 μ g/ml.

Lane 1: HeLa cell lysate

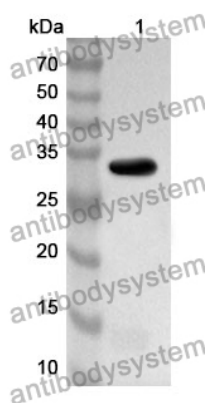
Lane 2: Raji cell lysate

Lane 3: SH-SY5Y cell lysate

Second Ab: Goat Anti-Rabbit IgG H&L Polyclonal antibody, HRP (PTB96431) at 0.1 μ g/mL.

Predict MW: 55 kDa

Observed MW: 55 kDa



Western Blot

Recombinant Protein lysates were subjected to SDS PAGE followed by western blot with CASP8 antibody (PHG90201) at 1 μ g/ml.

Lane 1: Recombinant Protein

Second Ab: Goat Anti-Rabbit IgG H&L Polyclonal antibody, HRP (PTB96431) at 0.1 μ g/mL.

Predict MW: 32 kDa

Observed MW: 32 kDa