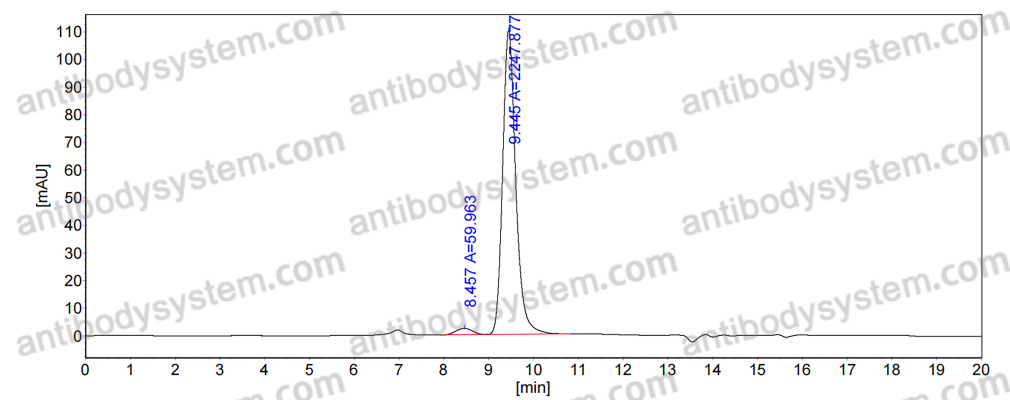


Anti-Human MAPT/Tau/PHF-tau Antibody (MC1)

Summary

| | |
|------------------------------|---|
| Catalog No. | RHC82420 |
| Clone ID | MC1 |
| Host species | Mouse |
| Species reactivity | Human |
| Form | Liquid |
| Storage buffer | 0.01M PBS, pH 7.4. |
| Concentration | 1.37 mg/ml |
| Purity | >95% as determined by SDS-PAGE. |
| Clonality | Monoclonal |
| Isotype | IgG2a, kappa |
| Applications | ELISA |
| Target | MAPTL, Paired helical filament-tau, MTBT1, Microtubule-associated protein tau, TAU, Neurofibrillary tangle protein, MAPT, PHF-tau |
| Purification | Protein A/G purified from cell culture supernatant. |
| Endotoxin level | Please contact with the lab for this information. |
| Accession | P10636 |
| Stability and Storage | Use a manual defrost freezer and avoid repeated freeze-thaw cycles. Store at 4°C short term (1-2 weeks). Store at -20°C 12 months. Store at -80°C long term. |
| Note | For research use only. |

Data Image



SEC-HPLC

The purity of this product is
>95% as determined by SEC-
HPLC.