

# Anti-DENV-2 Envelope protein E/EDE1 Antibody (C10)

## Summary

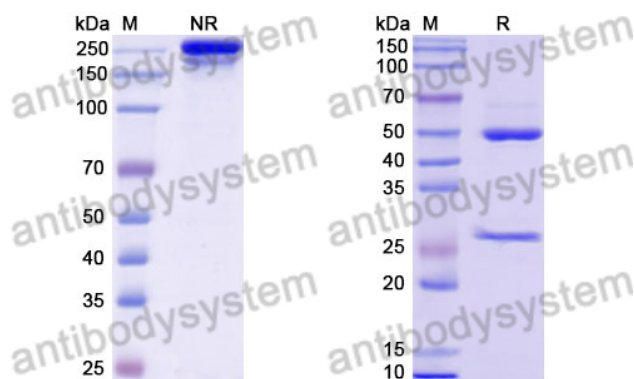
---

<b>Catalog No.</b>	RVV19921
<b>Clone ID</b>	C10
<b>Host species</b>	Human
<b>Species reactivity</b>	Dengue virus type 2 (strain Thailand/NGS-C/1944) (DENV-2), Zika virus (isolate ZIKV/Human/French Polynesia/10087PF/2013) (ZIKV)
<b>Form</b>	Liquid
<b>Storage buffer</b>	0.01M PBS, pH 7.4.
<b>Concentration</b>	3.65 mg/ml
<b>Purity</b>	>95% as determined by SDS-PAGE.
<b>Clonality</b>	Monoclonal
<b>Isotype</b>	IgG1, kappa
<b>Applications</b>	ELISA, WB
<b>Target</b>	Genome polyprotein, Envelope protein E
<b>Purification</b>	Protein A/G purified from cell culture supernatant.
<b>Endotoxin level</b>	Please contact with the lab for this information.
<b>Accession</b>	P14340, A0A024B7W1
<b>Stability and Storage</b>	Use a manual defrost freezer and avoid repeated freeze-thaw cycles. Store at 4°C short term (1-2 weeks). Store at -20°C 12 months. Store at -80°C long term.

**Note**

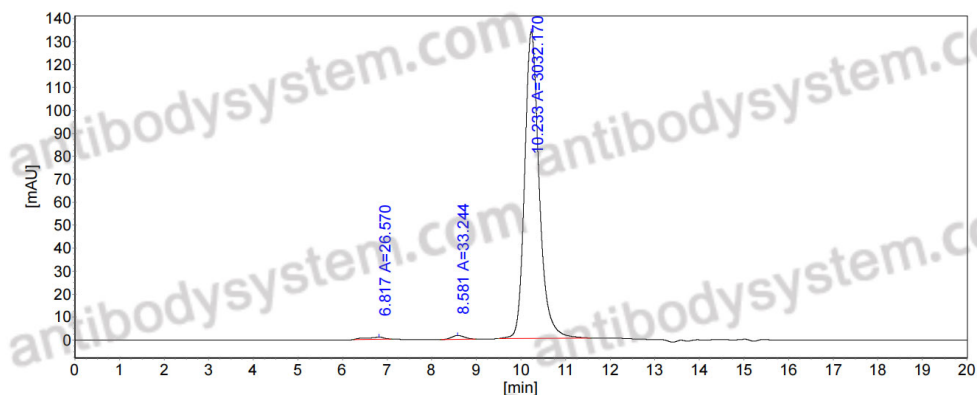
For research use only.

## Data Image



SDS PAGE for DENV-2  
Envelope protein E/EDE1  
Antibody

SDS-PAGE



The purity of this product is  
>95% as determined by SEC-  
HPLC.

SEC-HPLC