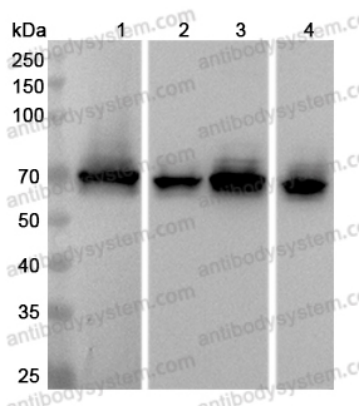


Anti-CRMP1 Polyclonal Antibody

Summary

Catalog No.	PHG74901
Host species	Rabbit
Tested applications	ELISA: 1:4000-1:8000, IHC: 1:50-1:100, WB: 1:1000-1:4000
Species reactivity	Human, Mouse, Rat
Immunogen	E. coli - derived recombinant Human CRMP1 (Met1-Val250).
Form	Liquid
Storage buffer	0.01M PBS, pH 7.4, 50% Glycerol, 0.05% Proclin 300.
Clonality	Polyclonal
Isotype	IgG
Applications	ELISA, IHC, WB
Target	ULIP-3,Inactive dihydropyrimidinase,CRMP1,DPYSL1,DRP-1,Dihydropyrimidinase-related protein 1,ULIP3,Collapsin response mediator protein 1,Unc-33-like phosphoprotein 3,CRMP-1
Purification	Purified by antigen affinity column.
Accession	Q14194
Stability and Storage	Use a manual defrost freezer and avoid repeated freeze thaw cycles. Store at 2 to 8°C for frequent use. Store at -20 to -80°C for twelve months from the date of receipt.
Note	For research use only.

Data Image



Western Blot

Various lysates were subjected to SDS PAGE followed by western blot with CEMP1 antibody (PHG74901) at 1µg/ml.

Lane 1: Mouse brain lysate

Lane 2: Mouse Cerebellum lysate

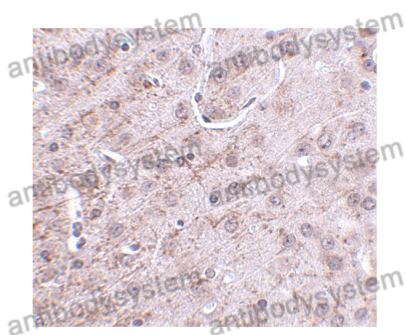
Lane 3: Rat brain lysate

Lane 4: Rat Cerebellum lysate

Second Ab: Goat Anti-Rabbit IgG H&L Polyclonal antibody, HRP (PTB96431) at 0.1 µg/mL.

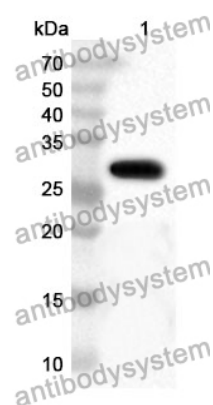
Predict MW: 62 kDa

Observed MW: 70 kDa



Immunohistochemical

Immunohistochemical analysis of mouse brain stained for CRMP1 with PHG74901.



Western Blot

Recombinant Protein lysates were subjected to SDS PAGE followed by western blot with CRMP1 antibody (PHG74901) at 1 µg/ml.

Lane 1: Recombinant Protein

Second Ab: Goat Anti-Rabbit IgG H&L Polyclonal antibody, HRP (PTB96431) at 0.1 µg/mL.

Predict MW: 30 kDa

Observed MW: 30 kDa