

# Recombinant ZIKV Protein prM/prM Protein, N-GST & C-His

## Summary

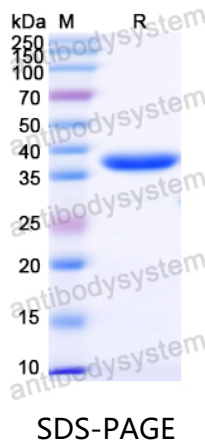
---

<b>Catalog No.</b>	YVV31801
<b>Alternative Names</b>	Genome polyprotein, Capsid protein C, Capsid protein, Core protein, Protein prM, Precursor membrane protein, Peptide pr, Peptide precursor, Small envelope protein M, Matrix protein, Envelope protein E, Non-structural protein 1, NS1, Non-structural protein 2A, NS2A, Serine protease subunit NS2B, Flavivirin protease NS2B regulatory subunit, Non-structural protein 2B, Serine protease NS3, 3.4.21.91, 3.6.1.15, 3.6.4.13, Flavivirin protease NS3 catalytic subunit, Non-structural protein 3, Non-structural protein 4A, NS4A, Peptide 2k, Non-structural protein 4B, NS4B, RNA-directed RNA polymerase NS5, 2.1.1.56, 2.1.1.57, 2.7.7.48, NS5
<b>Form</b>	Lyophilized
<b>Storage buffer</b>	Lyophilized from a solution in PBS pH 7.4, 0.02% NLS, 1mM EDTA, 4% Trehalose, 1% Mannitol.
<b>Purity</b>	>90% as determined by SDS-PAGE.
<b>Applications</b>	ELISA, Immunogen, SDS-PAGE, WB, Bioactivity testing in progress
<b>Endotoxin level</b>	Please contact with the lab for this information.
<b>Expression system</b>	E. coli
<b>Accession</b>	Q32ZE1
<b>Protein length</b>	Ser130-Arg215
<b>Nature</b>	Recombinant

## Recombinant Proteins &amp; Antibodies

<b>Predicted molecular weight</b>	37.91 kDa
<b>Stability and Storage</b>	Use a manual defrost freezer and avoid repeated freeze thaw cycles. Store at 2 to 8°C for frequent use. Store at -20 to -80°C for twelve months from the date of receipt.
<b>Reconstitution</b>	Reconstitute in sterile water for a stock solution. A copy of datasheet will be provided with the products, please refer to it for details.
<b>Species</b>	Zika virus (ZIKV)
<b>Shipping</b>	In general, proteins are provided as lyophilized powder/frozen liquid. They are shipped out with dry ice/blue ice unless customers require otherwise.
<b>Note</b>	For research use only.

## Data Image



SDS-PAGE for Recombinant ZIKV Protein prM/prM Protein