

Anti-Human Gal3/Galectin-3 Antibody (M3/38)

Summary

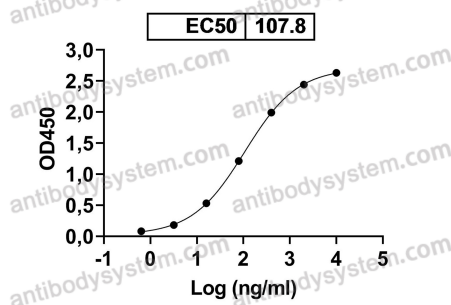
Catalog No.	RHD27102
Clone ID	M3/38
Host species	Mouse
Species reactivity	Human
Form	Liquid
Storage buffer	0.01M PBS, pH 7.4.
Concentration	1 mg/ml
Purity	>95% as determined by SDS-PAGE.
Clonality	Monoclonal
Isotype	IgG2a, kappa
Applications	ELISA, FCM
Target	Mac-2 antigen, Lectin L-29, LGALS3, Galactose-specific lectin 3, 35 kDa lectin, Galactoside-binding protein, CBP 35, L-31, Gal-3, Laminin-binding protein, Galectin-3, GALBP, IgE-binding protein, Carbohydrate-binding protein 35, MAC2
Purification	Protein A/G purified from cell culture supernatant.
Endotoxin level	Please contact with the lab for this information.
Accession	P17931
Stability and Storage	Use a manual defrost freezer and avoid repeated freeze-thaw cycles. Store at 4°C short term (1-2 weeks). Store at -20°C 12 months. Store at -80°C long term.

Note

For research use only.

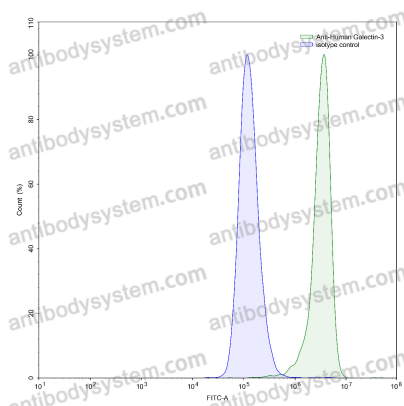
Data Image

M3/38 binds with Human LGALS3/Galectin-3



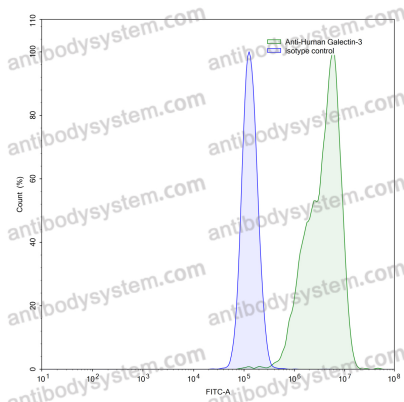
Detects Human LGALS3 in indirect ELISAs.

Bioactivity



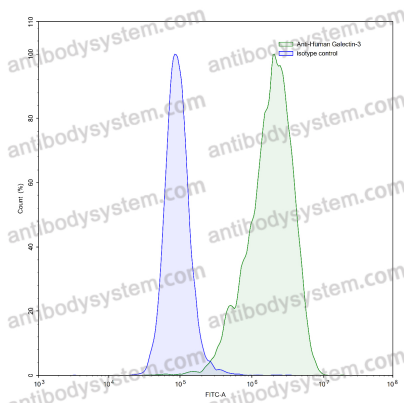
Flow-cytometry

Flow-cytometry using anti-human Galectin-3 antibody. HaCaT cells were stained with an irrelevant antibody (Blue Histogram) or an anti-human Galectin-3 antibody monoclonal antibody (Catalog # RHD27102, Green Histogram) at a concentration of 5 µg/ml for 30 mins at RT. After washing, bound antibody was detected using a FITC conjugated goat anti-mouse antibody (Catalog # PMB96441) and cells analysed on a NovoCyte Flow Cytometer.



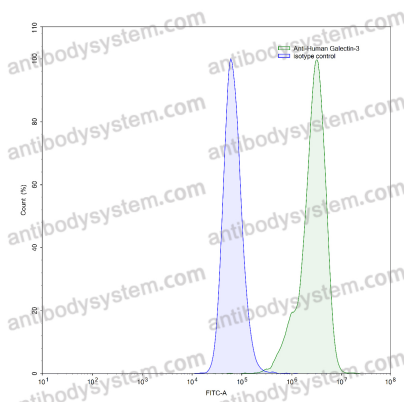
Flow-cytometry

Flow-cytometry using anti-human Galectin-3 antibody. MCF7 cells were stained with an irrelevant antibody (Blue Histogram) or an anti-human Galectin-3 antibody monoclonal antibody (Catalog # RHD27102, Green Histogram) at a concentration of 5 µg/ml for 30 mins at RT. After washing, bound antibody was detected using a FITC conjugated goat anti-mouse antibody (Catalog # PMB96441) and cells analysed on a NovoCyte Flow Cytometer.



Flow-cytometry

Flow-cytometry using anti-human Galectin-3 antibody. HeLa cells were stained with an irrelevant antibody (Blue Histogram) or an anti-human Galectin-3 antibody monoclonal antibody (Catalog # RHD27102, Green Histogram) at a concentration of 5 µg/ml for 30 mins at RT. After washing, bound antibody was detected using a FITC conjugated goat anti-mouse antibody (Catalog # PMB96441) and cells analysed on a NovoCyte Flow Cytometer.



Flow-cytometry

Flow-cytometry using anti-human Galectin-3 antibody. SiHa cells were stained with an irrelevant antibody (Blue Histogram) or an anti-human Galectin-3 antibody monoclonal antibody (Catalog # RHD27102, Green Histogram) at a concentration of 5 µg/ml for 30 mins at RT. After washing, bound antibody was detected using a FITC conjugated goat anti-mouse antibody (Catalog # PMB96441) and cells analysed on a NovoCyte Flow Cytometer.