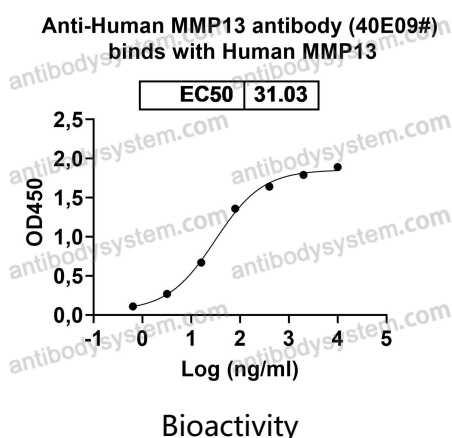


Anti-Human MMP13 Antibody (40E09#)

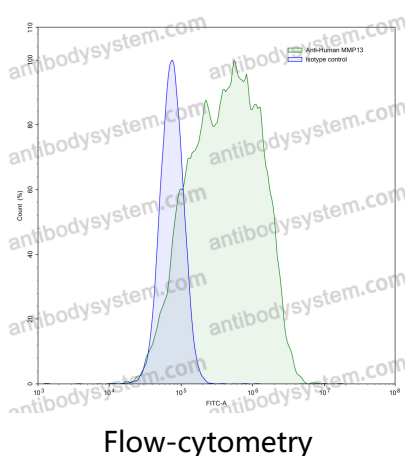
Summary

Catalog No.	RHE45101
Clone ID	40E09#
Host species	Mouse
Species reactivity	Human
Form	Liquid
Storage buffer	0.01M PBS, pH 7.4.
Concentration	1 mg/ml
Purity	>95% as determined by SDS-PAGE.
Clonality	Monoclonal
Isotype	VHH-mFc (IgG2a)
Applications	ELISA, FCM
Target	MMP-13, MMP13, Matrix metalloproteinase-13, Collagenase 3
Purification	Protein A/G purified from cell culture supernatant.
Endotoxin level	Please contact with the lab for this information.
Accession	P45452
Stability and Storage	Use a manual defrost freezer and avoid repeated freeze-thaw cycles. Store at 4°C short term (1-2 weeks). Store at -20°C 12 months. Store at -80°C long term.
Note	For research use only.

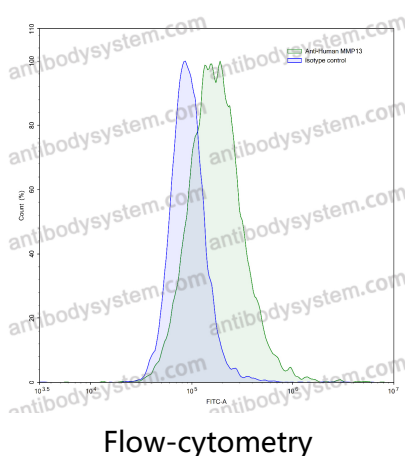
Data Image



Detects Human MMP13 in indirect ELISAs.



Flow-cytometry using anti-human MMP13 antibody. MDA-MB-231 cells were stained with an irrelevant antibody (Blue Histogram) or an anti-human MMP13 antibody monoclonal antibody (Catalog # RHE45101, Green Histogram) at a concentration of 5 µg/ml for 30 mins at RT. After washing, bound antibody was detected using a FITC conjugated goat anti-mouse antibody (Catalog # PMB96441) and cells analysed on a NovoCyte Flow Cytometer.



Flow-cytometry using anti-human MMP13 antibody. HeLa cells were stained with an irrelevant antibody (Blue Histogram) or an anti-human MMP13 antibody monoclonal antibody (Catalog # RHE45101, Green Histogram) at a concentration of 5 µg/ml for 30 mins at RT. After washing, bound antibody was detected using a FITC conjugated goat anti-mouse antibody (Catalog # PMB96441) and cells analysed on a NovoCyte Flow Cytometer.