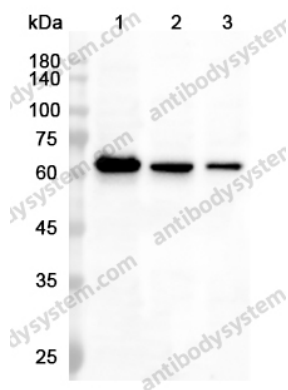


Anti-CDw210a/IL10RA Polyclonal Antibody

Summary

Catalog No.	PHG62901
Host species	Rabbit
Tested applications	ELISA: 1:4000-1:8000, IHC: 1:50-1:100, WB: 1:1000-1:4000
Species reactivity	Human
Immunogen	E. coli - derived recombinant Human CDw210a/IL10RA (Leu132-Asn235).
Form	Liquid
Storage buffer	0.01M PBS, pH 7.4, 50% Glycerol, 0.05% Proclin 300.
Clonality	Polyclonal
Isotype	IgG
Applications	ELISA, IHC, WB
Target	IL-10 receptor subunit alpha,IL-10R1,Interleukin-10 receptor subunit alpha,Interleukin-10 receptor subunit 1,CD210,IL10RA,CDw210a,IL-10R subunit alpha,IL-10R subunit 1,IL10R,IL-10RA
Purification	Purified by antigen affinity column.
Accession	Q13651
Stability and Storage	Use a manual defrost freezer and avoid repeated freeze thaw cycles. Store at 2 to 8°C for frequent use. Store at -20 to -80°C for twelve months from the date of receipt.
Note	For research use only.

Data Image



Western blot

Various lysates were subjected to SDS PAGE followed by western blot with CDw210a / IL10RA antibody (PHG62901) at 0.73µg/ml.

Lane 1: K562 cell lysate

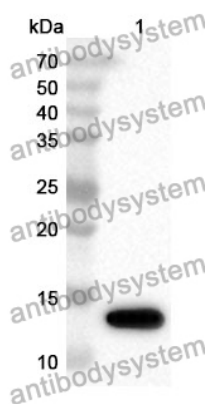
Lane 2: MCF-7 cell lysate

Lane 3: HepG2 cell lysate

Second Ab: Goat Anti-Rabbit IgG H&L Polyclonal antibody, HRP (PTB96431) at 0.1 µg/mL.

Predict MW: 63 kDa

Observed MW: 63 kDa



Western Blot

Recombinant Protein lysates were subjected to SDS PAGE followed by western blot with CDw210a/IL10RA antibody (PHG62901) at 1 µg/ml.

Lane 1: Recombinant Protein

Second Ab: Goat Anti-Rabbit IgG H&L Polyclonal antibody, HRP (PTB96431) at 0.1 µg/mL.

Predict MW: 14 kDa

Observed MW: 14 kDa