

# Anti-PTCH1 Polyclonal Antibody

## Summary

---

<b>Catalog No.</b>	PHG62201
<b>Host species</b>	Rabbit
<b>Tested applications</b>	ELISA: 1:4000-1:8000, IHC: 1:50-1:100, WB: 1:1000-1:4000
<b>Species reactivity</b>	Human, Mouse, Rat
<b>Immunogen</b>	E. coli - derived recombinant Human PTCH1 (Glu122-Leu249).
<b>Form</b>	Liquid
<b>Storage buffer</b>	0.01M PBS, pH 7.4, 50% Glycerol, 0.05% Proclin 300.
<b>Clonality</b>	Polyclonal
<b>Isotype</b>	IgG
<b>Applications</b>	ELISA, IHC, WB
<b>Target</b>	Protein patched homolog 1,PTC1,PTCH,PTCH1,PTC
<b>Purification</b>	Purified by antigen affinity column.
<b>Accession</b>	Q13635
<b>Stability and Storage</b>	Use a manual defrost freezer and avoid repeated freeze thaw cycles. Store at 2 to 8°C for frequent use. Store at -20 to -80°C for twelve months from the date of receipt.
<b>Note</b>	For research use only.

## Data Image

---



WESTERN BLOT

Recombinant Protein lysates were subjected to SDS PAGE followed by western blot with PTCH1 antibody (PHG62201) at 1 µg/ml.

Lane 1: Recombinant protein

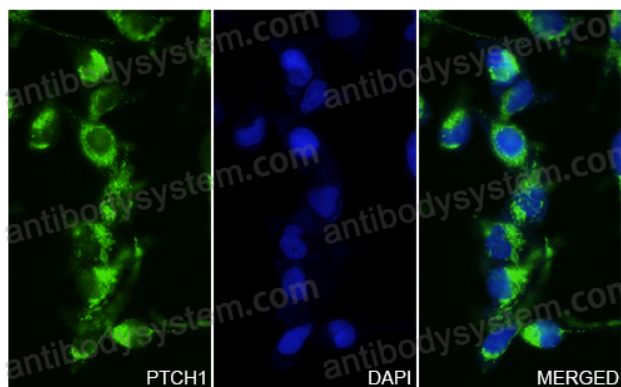
Second Ab: Goat Anti-Rabbit IgG H&L Polyclonal antibody, HRP (PTB96431) at 0.1 µg/mL.

Predict MW: 17 kDa

Observed MW: 17 kDa

PTCH1 in U251 Cell Line.

The U251 cells were fixed with 4% paraformaldehyde (20 min), and then blocked with 5% goat serum for 1h. And the cells were incubated for 2h at 37°C with PTCH1 (PHG62201) at 5.4 µg/ml. The section was then incubated with Goat Anti-Rabbit IgG (Alexa Fluor-488) preabsorbed at 1/100 dilution (Shown in green) for 1 hour at room temperature. Nuclear DNA was labelled with DAPI (shown in blue).



Immunocytochemistry/ Immunofluorescence