

# Anti-HDAC1 Polyclonal Antibody

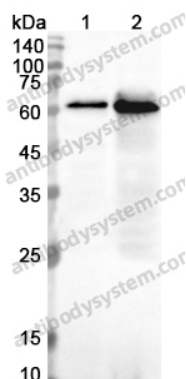
## Summary

---

<b>Catalog No.</b>	PHG58201
<b>Host species</b>	Rabbit
<b>Tested applications</b>	ELISA: 1:4000-1:8000, IHC: 1:50-1:100, WB: 1:1000-1:4000
<b>Species reactivity</b>	Human, Mouse, Rat
<b>Immunogen</b>	E. coli - derived recombinant Human HDAC1 (Val183-Ala482).
<b>Form</b>	Liquid
<b>Storage buffer</b>	0.01M PBS, pH 7.4, 50% Glycerol, 0.05% Proclin 300.
<b>Clonality</b>	Polyclonal
<b>Isotype</b>	IgG
<b>Applications</b>	ELISA, IHC, WB
<b>Target</b>	Histone deacetylase 1,HDAC1,RPD3L1,HD1
<b>Purification</b>	Purified by antigen affinity column.
<b>Accession</b>	Q13547
<b>Stability and Storage</b>	Use a manual defrost freezer and avoid repeated freeze thaw cycles. Store at 2 to 8°C for frequent use. Store at -20 to -80°C for twelve months from the date of receipt.
<b>Note</b>	For research use only.

## Data Image

---



Western blot

Various lysates were subjected to SDS PAGE followed by western blot with HDAC1 antibody (PHG58201) at 0.92 µg/ml.

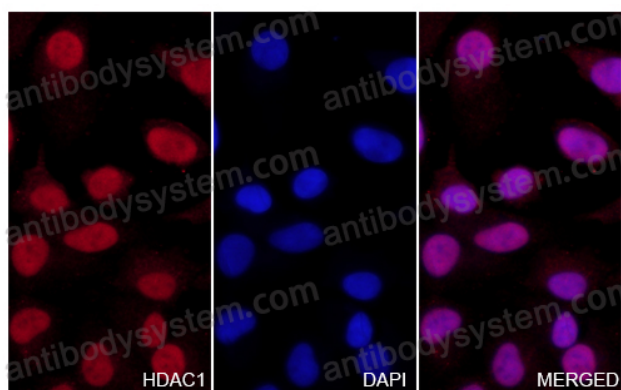
Lane 1: HeLa cell lysate

Lane 2: K562 cell lysate

Second Ab: Goat Anti-Rabbit IgG H&L Polyclonal antibody, HRP (PTB96431) at 0.1 µg/mL.

Predict MW: 55 kDa

Observed MW: 62 kDa



Immunocytochemistry/ Immunofluorescence

HDAC1 in HeLa Cell Line.

The HeLa cells were fixed with 4% paraformaldehyde (20 min), and then blocked with 5% goat serum for 1h. And the cells were incubated for 2h at 37°C with HDAC1 (PHG58201) at 9.2 µg/ml. The section was then incubated with Goat Anti-Rabbit IgG (Alexa Fluor-594) preabsorbed at 1/100 dilution (Shown in red) for 1 hour at room temperature. Nuclear DNA was labelled with DAPI (shown in blue).



Western Blot

Recombinant Protein lysates were subjected to SDS PAGE followed by western blot with HDAC1 antibody (PHG58201) at 1 µg/ml.

Lane 1: Recombinant Protein

Second Ab: Goat Anti-Rabbit IgG H&L Polyclonal antibody, HRP (PTB96431) at 0.1 µg/mL.

Predict MW: 36 kDa

Observed MW: 36 kDa