

# Native Monkey ALB/Albumin Protein

## Summary

---

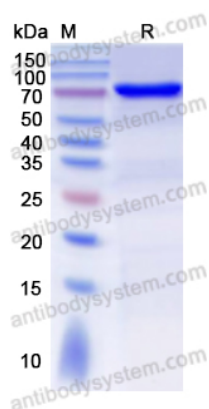
<b>Catalog No.</b>	EWC01401
<b>Alternative Names</b>	Albumin, ALB
<b>Form</b>	Liquid
<b>Storage buffer</b>	PBS pH 7.4
<b>Concentration</b>	0.74 mg/ml
<b>Purity</b>	>90% as determined by SDS-PAGE.
<b>Applications</b>	ELISA, Immunogen, SDS-PAGE, WB, Bioactivity testing in progress
<b>Endotoxin level</b>	Please contact with the lab for this information.
<b>Expression system</b>	Native
<b>Accession</b>	Q28522
<b>Protein length</b>	Full length.
<b>Nature</b>	Native
<b>Predicted molecular weight</b>	68 kDa
<b>Stability and Storage</b>	Use a manual defrost freezer and avoid repeated freeze thaw cycles. Store at 2 to 8°C for frequent use. Store at -20 to -80°C for twelve months from the date of receipt.
<b>Species</b>	Monkey
<b>Shipping</b>	In general, proteins are provided as lyophilized powder/frozen liquid. They are shipped out with dry ice/blue ice unless customers require otherwise.

Note

For research use only.

## Data Image

---



SDS-PAGE

SDS-PAGE for Native Monkey ALB/Albumin Protein